



Plastics & Cosmetic Surgical Instrument Highlights

Volume 2

HAYDEN MEDICAL

Precision Craftsmanship
Family Owned Passion



661-296-7200



www.haydenmedical.com



info@haydenmedical.com

Company Message



TOM OCSEK
Operations Manager



HAYDEN CLELLAND
VP, Co-Owner



SCOTT CLELLAND
Founder

Hayden Medical is your trusted source for premium German surgical instruments at competitive prices. Why continue purchasing from suppliers who charge a premium, when you can secure the best value with Hayden Medical?

For all your specialty plastic and cosmetic surgery instrument needs, Hayden Medical offers high-quality solutions. We provide the option to personalize instruments with anything from custom text to your surgery center's logo using our advanced laser marking system.

With over 75 years of combined experience in the surgical instrument industry, we understand which tools will best meet the specific requirements of cosmetic and plastic surgery procedures. We specialize in sourcing even the most hard-to-find items, removing the uncertainty from your procurement process.

At Hayden Medical, we combine top-tier German craftsmanship with exceptional customer service and cost-effective pricing. Whether you are a long-time user of Hayden instruments or a first-time customer, you'll notice the superior quality and performance every time you use our products.

RETURNED GOODS POLICY



All returns must be accompanied by a Returned Goods Authorization number, available by calling our Customer Service Department.

THE FOLLOWING INFORMATION IS NEEDED TO REQUEST AUTHORIZATION FOR A RETURN.

- REASON FOR RETURN
- DATE OF PURCHASE
- INVOICE OR PO NUMBER
- PRODUCT NUMBER AND SIZE
- QUANTITY TO RETURN

All authorized returns must be made within thirty (30) days of the invoice date and accompanied by the appropriate purchase order number and Returned Goods Authorization number.

ALLOWABLE SCHEDULE FOR AUTHORIZED RETURN.

- Products processed in error by Hayden Medical, Inc. will be credited in full
- Defective product will be credited in full
- Unless defective or shipped in error, any return accepted is subject to up to a 25% restocking fee (minimum of \$10.00)
- All returned items are subject to Hayden Medical, Inc. inspection and acceptance
- Product must be shipped prepaid

NON-RETURNABLE, OTHER THAN FOR MANUFACTURING DEFECT.

- Engraved instruments or instruments etched or labeled by the hospital, surgery center or surgeon's office
- Products damaged beyond repair or refurbishment or not in saleable condition
- Instruments returned more than thirty (30) days after invoice date
- Custom, laser marked, special or modified items
- Disposable items and cannulas

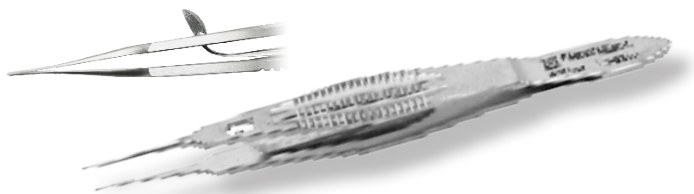
Used products must be returned sterile wrapped or they will not be accepted.



SEND ALL RETURNS TO:
19425 Soledad Canyon Road, #411
Santa Clarita, CA 91351



Stern Castroviejo Suturing Forceps with Locking Mechanism



The Stern Castroviejo forceps have a locking mechanism to secure delicate tissue during oculoplastic surgeries.

Model	Description
E5-6312	1x2 teeth, 0.5mm w/ 0.6mm tying platform, 4-1/4"

Tebbetts Style Retractors

Fiber Optic



The Tebbetts Style Retractor is designed with a blue silicone handle for easier grip and teeth to be used primarily in breast, face, and neck surgery procedures. Our lighted retractors have a universal connection for use with industry-standard fiber optic cables.

Model	Description
405-828L	1" x 3-1/4"

Ceramic Freeman-Kaye Facelift Scissors



Ceramic Freeman-Kaye Facelift Scissors are designed for delicate skin dissection on the face and neck, featuring a durable ceramic coating and SuperCut technology with one micro-serrated blade and one razor-sharp blade. Spread open shanks conform to normal resting position of the hand thus improving control and reducing fatigue.

Model	Description
500-926SCK	ceramic, SuperCut, curved, saberback, offset hand rings, 7"

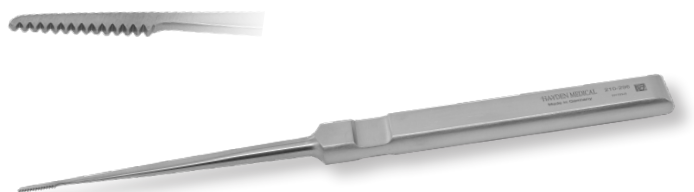
Cartilage Grafting Block



Hayden Medical's Cartilage Grafting Block has 6 grooved inserts with 4 varying thicknesses to aid in sizing cartilage grafts for nasal surgery.

Model	Description
194-410	delrin, thicknesses of 0.5mm-2.0mm

Micro Saws



Micro Saws are a new tool designed for preservation rhinoplasty techniques. They allow for finer and more precise osteotomies than traditional saws.

Model	Description
210-296	7-1/2"

Micro Inserters



The Micro Inserter for rhinoplasty is most often used for inserting rim grafts. These offer an alternate approach to using forceps for rim graft insertion.

Model	Description
210-297	4-1/2"

Ceramic Freeman Gorney Scissors



Ceramic Freeman Gorney Facelift Scissors are used for delicate skin dissection on the face and neck areas. Commonly used to isolate skin flaps during plastic and general surgeries.

Model	Description
500-952SCK	curved, offset hand rings, saberback, 7-1/2"

- Utilizing SuperCut Technology with one micro-serrated blade and one razor-sharp blade for atraumatic dissection
- Ceramic coating strengthens the blades and keeps scissors sharper longer

Custom DeBakey Non-Conductive Atraumatic Forceps



Hayden Medical DeBakey Forceps feature a minimally exposed tip to ensure a more precise grip and cauterization. With half of the standard exposure of steel on the tips, this helps to reduce potential for cautery to spread past the 12mm tips.

Model	Description
120-520NC-F	2.0mm wide tips, 6"
120-522NC-F	2.0mm wide tips, 7-3/4"
120-524NC-F	2.0mm wide tips, 9-1/2"

Submental Retractors

Fiber Optic



Submental Fiber Optic Retractors are designed specifically for use with face and neck procedures. These retractors feature a fiber optic light tube compatible with industry standard light sources.

Model	Description
210-180L	60 x 18mm tapered blade, 4-1/4"

Loeffler Needle Holders



Loeffler Needle Holders feature a locking mechanism and diamond dust coated jaws. These are ideal for finer sutures.

Model	Description
620-124	delicate short jaws, 6"

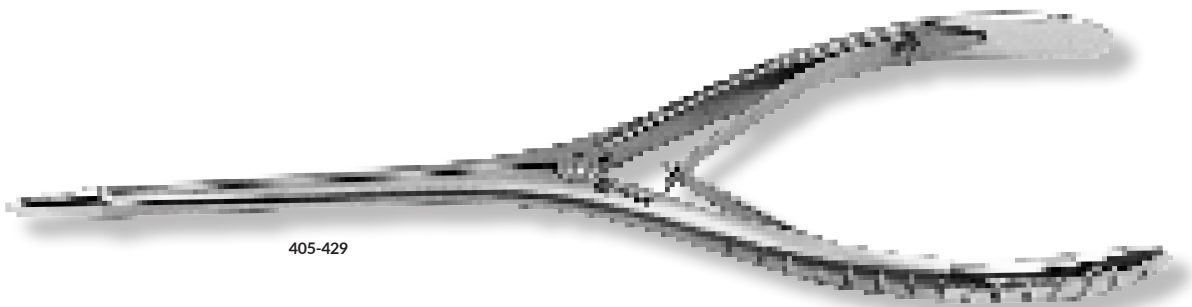
Adson-Brown Forceps



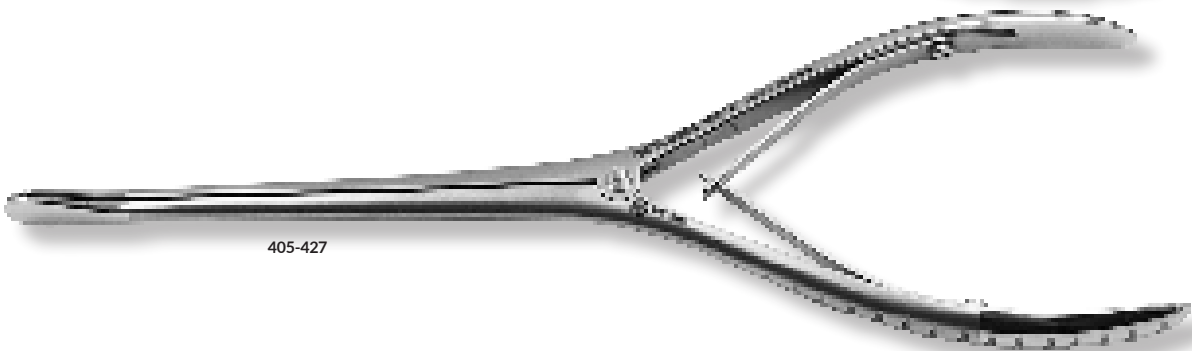
The unique tooth and handle design reduces tissue slippage, patient tissue trauma and ensures comfortable usage in the surgeon's hands.

Model	Description
540-124	3x3 teeth, tungsten carbide jaws, 4-3/4"
540-128	4x4 teeth, tungsten carbide jaws, 6"

NEW FACIAL FLAP DISSECTORS



Extra-Long



TIPS



The new **Hayden Medical Facial Flap Dissectors** are designed to assist with procedures like facelifts, brow lifts, and endoscopic brow lifts. Smooth, atraumatic tips, aim to minimize tissue trauma while allowing for careful skin elevation. Hayden Medical's Facial Flap Dissector features blunt edges and a squeezing mechanism to atraumatically separate skin from bone for elevation

- Squeezing mechanism to elevate skin from bone
- Atraumatic tips for gentle skin elevation
- 3 variations to fit your surgical needs

Model	Description
405-427	Facial Flap Dissector, Jerry Tip, 4-1/4" working length
405-428	Facial Flap Dissector, 5" working length
405-429	Facial Flap Dissector, 3-3/4" working length

Contact us for more information!

PAR Scissors



Hayden Medical's PAR (Plastic and Reconstructive) Scissors feature SuperCut technology to cut delicate tissue. Hayden Medical's PAR Scissors are available with either a ceramic coating or Tungsten Carbide jaws, providing increased durability and precision for dissection.

Model	Description
100-321SC	SuperCut, curved, 4-1/2"
100-321SCK	ceramic, SuperCut, curved, curved, 4-1/2"
500-321	tungsten carbide, SuperCut, curved, 4-1/2"

Ceramic Stevens Tenotomy Scissors



Ceramic Stevens Tenotomy Scissors feature a ceramic coating for durability and one micro-serrated blade with one razor-sharp blade for more precise cutting and reduced tissue slippage.

Model	Description
100-403SCK	ceramic, SuperCut, curved sharp points, 4-1/2"
100-404SCK	ceramic, SuperCut, curved blunt points, 4-1/2"

Diamond Dust Castroviejo Suture Forceps



Delicate 0.5mm jaw for gripping delicate tissues or sutures. Large handle for more precise use.

Model	Description
120-952D	1x2 teeth, 4-3/4"

Green Tissue Forceps



Often used in ophthalmic procedures to perform a "pinch test" preoperatively. T-shaped atraumatic tips help to securely grasp delicate tissue around the eye.

Model	Description
120-894	10mm wide teeth w/o lock, 4"
120-897	5mm wide 8x9 teeth w/o lock, 4"

Guthrie Hooks



Guthrie Hooks are used for retracting skin during dermatologic and plastic surgery procedures with two sharp prongs. Two hook widths available.

Model	Description
210-165	1.5mm wide, 5"
210-167	2.5mm wide, 5"

Desmarres Non-Conductive Retractors



Model	Description
210-194NC	11mm
210-195NC	13mm
210-196NC	15mm
210-197NC	17mm
210-198NC	Double Ended 8/10mm

Tungsten Needle Drivers



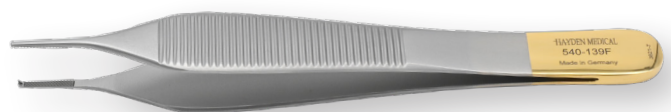
Model	Description
520-040	Baby Webster, serrated, delicate, 4-3/4"
520-042	Baby Webster, smooth, delicate, 4-3/4"
520-070	Webster, smooth, 5-1/4"
520-075	Halsey, serrated, 5-1/4"
520-080	Halsey, smooth, 5-1/4"

Bishop-Harmon Suture Forceps



Model	Description
120-866	fine cross-serrated 0.5mm wide, 3-3/8"
120-865	delicate 0.6mm w/ tying platform, 1x2 teeth, 3-3/8"
120-868	standard 0.7mm wide, 1x2 teeth, 3-3/8"
120-869	standard 0.9mm, 1x2 1x2 teeth, 3-3/8"

Adson Forcep with Tungsten Insert



Model	Description
540-136	tissue, 1x2 teeth, serrated, standard 1.4mm tip, 4-3/4"
540-139F	tissue, 1x2 teeth, serrated tying platform, delicate 1mm tip, 4-3/4"
540-141	tissue, 1x2 teeth, serrated tying platform, standard 1.4mm tip, 6"
540-116	dressing, smooth, standard 1.4mm tip, 4-3/4"
540-117	dressing, serrated, standard 1.4mm tip, 4-3/4"

Ocular Laser Shields with Suction Cup



Model	Description
OP21-261P	X-Small 22.0 x 19.5mm Pair
OP21-262P	Small 24.0 x 21.0mm Pair
OP21-264P	Medium 25.5 x 22.0mm Pair
OP21-266P	Large 26.5 x 23.0mm Pair

Ocular Laser Shields with Handle



Model	Description
OP21-261HP	X-Small 22.0 x 19.5mm Pair
OP21-262HP	Small 24.0 x 21.0mm Pair
OP21-264HP	Medium 25.5 x 22.0mm Pair
OP21-266HP	Large 26.5 x 23.0mm Pair

Plastic Ocular Shields with Suction Cup



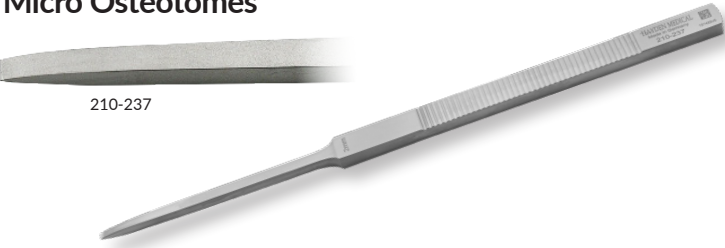
Model	Description
OP23-201BP	X-Small 23.5 x 21.5mm Pair
OP23-202BP	Small 26.0 x 23.5mm Pair
OP23-204BP	Medium 27.5 x 24.5mm Pair
OP23-206BP	Large 28.5 x 25.5mm Pair

Plastic Ocular Shields with Handle



Model	Description
OP23-201BHP	X-Small 23.5 x 21.5mm Pair
OP23-202BHP	Small 26.0 x 23.5mm Pair
OP23-204BHP	Medium 27.5 x 24.5mm Pair
OP23-206BHP	Large 28.5 x 25.5mm Pair

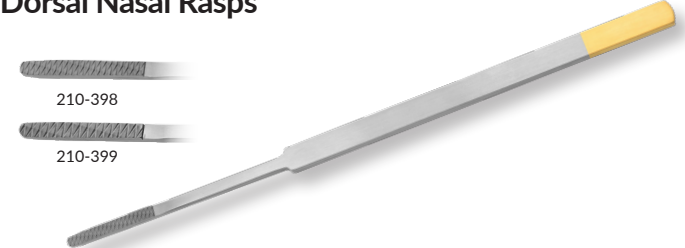
Micro Osteotomes



Micro Osteotomes allow for precise medial or lateral osteotomies during rhinoplasty surgery. Grooved handles facilitate better grip and help to reduce slippage while in the surgeon's hand. A sturdy back end of the osteotome will withstand the force of weighted mallets during the "tap, tap".

Model	Description
210-236	1mm wide, straight, 7"
210-237	2mm wide, straight, 7"
210-240	4mm wide, straight, 7"

Dorsal Nasal Rasps



Dorsal Nasal Rasps have a 2mm width for more precise rasping. Available in 2 levels of coarseness.

Model	Description
210-398	Grit #8, 2mm working length, 6-1/2"
210-399	Grit #9, 2mm working length, 6-1/2"

Double Ended Nasal Rasps



We offer double-ended nasal rasps that feature varying levels of coarseness from #1 to #10. Two different tips offer more versatility per instrument.

- Tungsten carbide tips
- Ergonomic handle
- Long-lasting German stainless steel construction

Model	Description
210-363	#1/2, very coarse
210-364	#3/4, medium / coarse
210-365	#5/6, medium
210-366	#7/8, fine / medium
210-367	#9/10, very fine

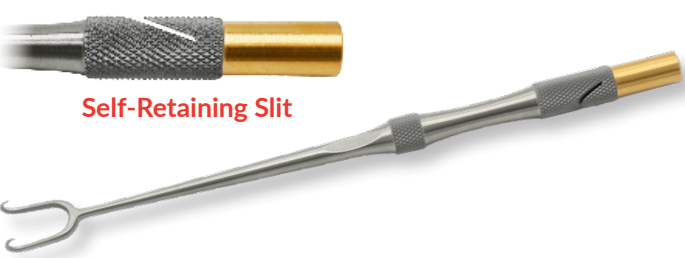
Cinelli Osteotomes



Cinelli Osteotomes with guards help to shape and shave away at the bony nasal hump. Double guards help to protect and preserve delicate surrounding structures and tissue in the nose.

Model	Description
210-215	10mm cut, 6-1/2"
210-216	12mm cut, 6-1/2"
210-217	14mm cut, 6-1/2"

Tebbetts Style Self-Retaining Skin Hooks



Tebbetts-Style Self-Retaining Skin Hooks are similar to Joseph Skin Hooks, but have a slit in the shaft of the hook. These slits hold a rubber band that can be stapled or sutured to a drape for a self-retaining function.

Model	Description	Model	Description
210-690	single hook	210-693	8mm double hook
210-691	2mm double hook	210-694	11mm double hook
210-692	5mm double hook	210-695	13mm double hook w/ ball ends

Jansen-Middleton Septum Forceps



Jansen-Middleton Septum Forceps from Hayden Medical have been refined to lower the instrument profile in the nose. This more refined design and double action jaws help to more easily punch septal cartilage.

Model	Description
200-558	through-cutting, 13 x 3mm, 6-3/4"

Masing Elevators



Masing Elevators feature finer tips compared to standard dissectors like the Freer or Cottle. Often used in preservation rhinoplasty.

Model	Description
210-059	3.3mm sharp and 2.4mm blunt end, wide blades, 8"

Ballenger Swivel Knives



Ballenger Swivel Knives for cartilage grafts are available in varying blade widths and are available in a straight or bayonet-style shaft.

Model	Description
200-216	3mm wide, straight, 7-3/4"
200-218	4mm wide, straight, 7-3/4"
200-222	3mm wide, bayonet, 7-3/4"
200-224	4mm wide, bayonet, 7-3/4"

Caplan Nasal Bone Scissors



Caplan Nasal Bone Scissors offer an alternate approach to cutting nasal bone and cartilage. Serrated blades and double action jaws can aid in cutting bone and cartilage easier than standard ring-handled scissors.

Model	Description
210-622	serrated blades, 8"

Wilmer (Converse) Scissors



Wilmer (Converse) Nasal Scissors have angled tips for easier visualization of nasal structures while dissecting. SuperCut blades help to reduce blade slippage while dissecting and cutting slippery nasal cartilage.

Model	Description
100-472SC	SuperCut, angled on flat, 4"

Weighted Nasal Retractors



Weighted Nasal Retractors for open rhinoplasty are used to free a surgeon's hand to retract the nasal skin for better viewing of the internal nasal structures.

Model	Description
210-771	Desmarres Weighted Retractor, 12mm blade, 14cm chain
210-772	Gruber Columella Weighted Retractor, two sharp prongs 10mm, 6cm chain



Ferriera Retractors
Additional variations available

Hayden Medical's Ferriera Breast Retractor with fiber optic light and suction tubes has a smooth round end. Our lighted retractors have a universal connection for use with industry-standard fiber optic cables.

Model	Description
405-110LS	70mm x 14mm
405-121LS	80mm x 16mm
405-143LS	100mm x 25mm
405-163LS	150mm x 25mm



Tebbetts Retractors
Additional variations available

Often used in breast procedures to allow for insertion of implants. V-shaped atraumatic tips help to secure and retract delicate breast tissues. This retractor also has a universal connection for use with industry-standard fiber optic cables and includes suction tubes.

Model	Description
405-234LS	90mm x 24mm
405-243LS	100mm x 25mm
405-263LS	150mm x 25mm

Monopolar Handswitching Forceps



Our Monopolar forceps features a hand-activated switch to eliminate the need for foot pedals. These long, insulated forceps are ideal for many different electrosurgery procedures.

- Fine non-stick tips for accuracy & speed of tissue dissection
- Hand-activated switch eliminates the need for foot pedals
- Attached cord can be used with most ESUs
- Autoclavable

Model	Description
218-221	includes 10' (3.0M) cord, 9-1/2"

Freeman Cutting Areola Markers



Hayden Medical's Freeman Cutting Areola Markers have serrated edges for cutting or scoring the around the nipple during breast surgery procedures. Available in sizes 18mm to 45mm.

Model	Description
Single Ended	18mm, 22mm, 25mm, 30mm, 32mm, 34mm, 36mm, 38mm, 40mm, 42mm, 45mm
Double Ended	38/42mm, 42/45mm

Double Ended Breast Retractors



Double Ended Breast retractors are often used for retraction during breast dissection or implant insertion/removal.

Model	Description
405-749	37 x 70mm / 22 x 55mm blades, 9"
405-750	37 x 70mm / 22 x 55mm blades, 12-1/2"

Lockwood Flap Markers

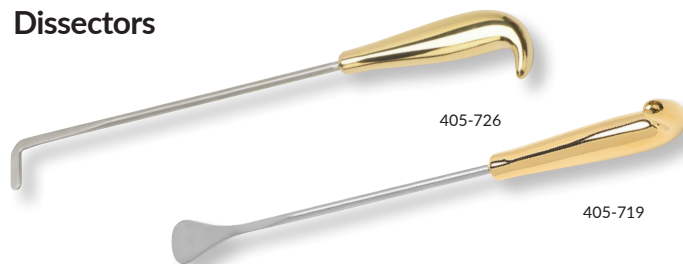


Used for grasping and marking large tissue flaps before excision during abdominal surgery. Splayed shanks prevent thick flaps from obstructing the marker while closing, allowing optimal leverage when gripping.

Model	Description
-------	-------------

405-612	w/ angled hinge, 9.5mm wide, w/o ratchet, 12-3/4"
---------	---

Dissectors



Body flap dissectors help to dissect and elevate deep into hard-to-reach pockets. Multiple tip configurations are available to accommodate deeper flap dissection, retraction and elevation.

Model	Description
-------	-------------

405-726	Breast Dissector, rigid, angulated flat blade, 13"
---------	--

405-719	Reynolds Transaxillary Breast Dissector, rigid, solid blade, 13"
---------	--

Lockwood Underminers



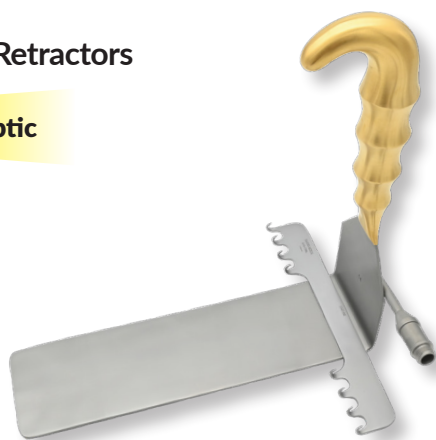
The Lockwood Underminer is a large dissector for undermining during abdominoplasty or tummy tuck surgeries. The large handle, blunt tip and thick blade provide stability and rigidity to the undermining, eliminating coiling and risk of perforation like traditional, thinner underminers.

Model	Description
-------	-------------

405-400	3cm lift, 14-9/10" shaft length
---------	---------------------------------

Saldhana Retractors

Fiber Optic



Model	Description
-------	-------------

210-758L	8-prong , w/ 8" x 2-1/4" blade, fiber optic light w/ universal connector
----------	--

210-756L	8-prong , w/ 5" x 2-3/8" blade, fiber optic light w/ universal connector
----------	--

Mayo-Hegar Needle Holders



Model	Description
-------	-------------

520-314	serrated, ratchet lock, tungsten carbide, 5-1/2"
---------	--

520-320	serrated, ratchet lock, tungsten carbide, 8"
---------	--

520-331	serrated, ratchet lock, tungsten carbide, 12"
---------	---

Ferriera Style Face Lift Retractors

The Ferriera Style Face Lift Retractor goes beyond the facelift with small breast augmentation and gender reassignment procedures. The concave blade creates a hood rather than a tent while retracting.

- Universal light cable connectivity
- L-shaped blade with flat working surface
- Used primarily in facelift, abdominoplasty, breast augmentation, & gender reassignment procedures

Model	Description
405-410L	110mm x 22mm



Aufricht Nasal Retractors

The Aufricht Nasal Retractor has a wide range of versatility in plastic and ENT surgical applications. The concave blade is optimal for allowing extra operative space comparatively. This allows visualization of delicate tissue or fine structures if desired. Two sizes are available for preference and surgical need.

- Concave blade for extra operative space
- Universal light cable connectivity
- Two sizes to accomodate to surgical need

Model	Description
210-188L	7mm x 45mm, blade 7"
210-189L	10mm x 45mm, blade 7"



2MM FIBER BUNDLE DIAMETER

To avoid overheating, we recommend a 2mm cord to match the 2mm fiber bundle in our Aufricht retractors. Correctly matching fiber bundle sizes minimizes overheating, increases safety, and maximizes the life of the cable and retractor.



Contact us for more information!

SCAN TO VIEW OUR LIGHTED RETRACTOR'S
UNIVERSAL CONNECTION



Freeman-Gorney Facelift Scissors



Freeman-Gorney Facelift Scissors are precision tools for delicate dissection of the face and neck. Used in plastic and general surgeries, they isolate skin flaps with minimal trauma using SuperCut tips for optimal results.

Model	Description
500-952SCK	ceramic, curved, saberback, 7-1/2"

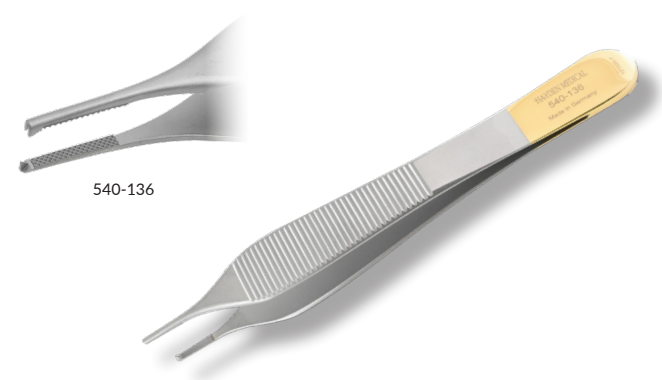
Needle Holders



The Webster and Halsey Needle Holders are used to securely hold needles and sutures in place during operation to ensure precision and stability. These needle holders are designed with tungsten carbide jaws for durability.

Model	Description
520-070	Webster Needle Holder, smooth jaws, delicate, 5-1/4"
520-075	Halsey Needle Holder, serrated jaws, 5"

Tungsten Platform Adson Tissue Forceps



Designed with tungsten carbide jaws and serrated tying platforms, Hayden Medical's Tungsten Platform Adson Forceps are used in several surgical procedures including flap reconstruction, rhinoplasty, and blepharoplasty.

Model	Description
540-136	1x2 teeth, standard 1.4mm tip, 4-3/4"
540-141	1x2 teeth, standard 1.4mm tip, 6"

Joseph Double Hooks



Joseph Double Hooks from Hayden Medical are designed to elevate and retract tissue flaps during dissection. This surgical instrument is designed with a grooved ergonomic grip to maintain precision while exposing surgical areas.

Model	Description
210-153	2mm wide, 6-1/4"
210-154	5mm wide, 6-1/4"
210-155	7mm wide, 6-1/4"
210-156	10mm wide, 6-1/4"

ALL-IN-ONE HD ENDOSCOPIC CAMERA SYSTEM



UNIVERSAL CAMERA FITTING



The **Full 1080p HD All-in-one Camera System** from Hayden Medical is a complete solution for endoscopic visualization. This system includes 19" screen, light cable with Storz style connection, power cable, video cable with camera head (white balance, zoom, image capture), keyboard and mouse for screen capture capability, and more.

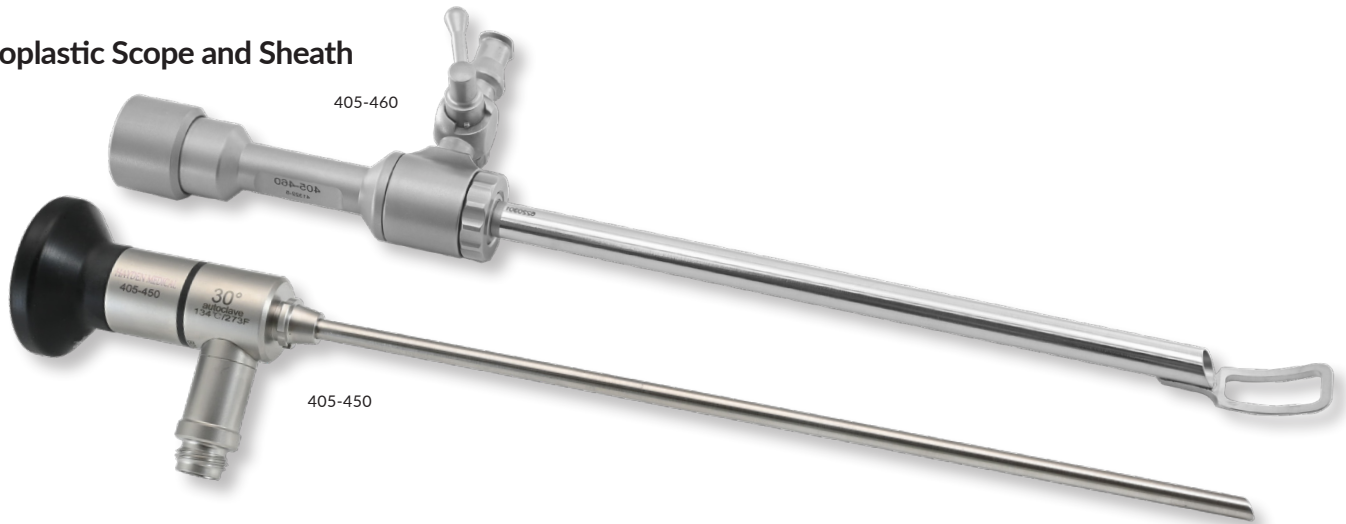
- All-in-one System
- Full HD Video
- Universal Scope Application
- Integrated Fiber Optic Light Source

Model	Description
405-470	Full HD Camera System w/ integrated monitor and light source, 1080p resolution w/ touchscreen

SCAN FOR A QUICK
SET UP VIDEO



Endoplastic Scope and Sheath



Fenestrated Tip & Rotating Stopcock

- Fenestrated tip for optimal viewing through scope
- Standard Storz-style connection
- Universal light cable connectivity
- Integrated irrigation

Model	Description
405-460	Fenestrated Tip & Rotating Stopcock, 11mm x 17mm, 6-8/10"
405-450	Endoplastic Sheath, 30°, wide angle, 030-125A sterilization case included, 4mm diameter, 7"

Brow Lift Elevators



SCAN FOR MORE STYLES



Brow Lift Elevators from Hayden Medical are designed for various stages of the endoscopic brow lift. Every variation features an ergonomic handle for accurate dissecting.

Endo-Forehead Instruments



Used in Endoscopic Brow Lift or Forehead Lift procedures, these Endo-Forehead Instruments have a bend in the shaft to contour to the patient's forehead. Multiple variations are offered to hold, grasp, or cut tissue during procedures.

Light Source



Model	Description
LS-200LED	LED Light Source, w/ multi turret

Light Cables



Model	Description
450-678/20	10' x 2.0mm
450-678/35	10' x 3.5mm
450-678/50	10' x 5.0mm

Light Cable Adapters

Light Source End



Model	Description
450-AC900	ACMI/Olympus
450-WO900	Wolf
450-ST900	Storz

Instrument End



Model	Description
450-AC800C	ACMI Plunger
450-WO800	Wolf
450-ST800	Storz

BIPOLAR INSTRUMENTS

Jeweler



218-004NS



218-004

Hayden Medical's Jeweler BiPolar Forceps feature 0.25mm stainless steel tips for precision coagulation and cauterization. Available with or without Non-Stick Tips.

Model	Description
218-004	insulated, 2 pin plug, 4-1/4"
218-004NS	insulated, 2 pin plug, non-stick coated tips, 4-1/4"

Adson



218-010NS



218-010

Hayden Medical's Jeweler Adson Forceps feature 1mm stainless steel tips with a smooth jaw for precise manipulation during electrosurgery. Available with or without Non-Stick Tips.

Model	Description
218-010	insulated, 2 pin plug, 4-3/4"
218-010NS	insulated, 2 pin plug, non-stick coated tips, 4-3/4"

Bipolar Cords

Bipolar Cords are autoclavable and reusable with twin banana plugs and coated with TPR (Thermoplastic Rubber). This cord is an essential piece of equipment for electrocautery with a rectangular instrument end connector.

- Reusable
- Coated with TPR (Thermoplastic Rubber)
- Autoclavable

Model	Description
218-140	12'



Bayonet

More styles available



218-055UNS



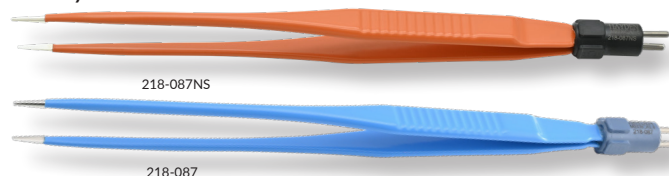
218-055U

Bayonet Bipolar Forceps with upward or downward angled 1mm stainless steel tips are available in different lengths depending on procedure type. With or without Non-Stick tips.

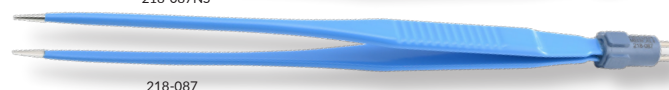
Model	Description
218-055U	angled up, insulated, 2 pin plug, 7-3/4"
218-0555	angled down, insulated, 2 pin plug, 7-3/4"
218-055UNS	angled up, insulated, 2 pin plug, non-stick tips, 7-3/4"

Straight

More styles available



218-087NS



218-087

Hayden Medical's Straight Bipolar Forceps with 1mm stainless steel tips are available with or without Non-Stick tips and various lengths for different surgical procedures.

Model	Description
218-087	insulated, 2 pin plug, 7"
218-087NS	insulated, 2 pin plug, non-stick tips, 7"



HAYDEN MEDICAL

LIPOPLASTY

CANNULA HO

Hayden Medical's cannulas and cannula accessories are made of high-quality, medical-grade stainless steel and made to order in the USA. If there is a size or pattern that you don't see, we can make it.

Please contact us directly with custom cannula requests.

SATTLER

270° of extraction and 18 holes for low-volume liposuction procedures (available with angled shaft). Typically used to harvest for small-volume fat grafting to areas like the face and hands.

Model	Diameter	Length	Hub Options
HC-SAT0315	3mm	15cm	LL / LH / TM
HC-SAT0326	3mm	26cm	LL / LH / TM
HC-SAT0332	3mm	32cm	LL / LH / TM

MERCEDES

360° of extraction or deployment and 3 holes for high-volume liposuction procedures. Typically the most popular and commonly used liposuction cannula.

Model	Diameter	Length	Hub Options
HC-MER0326	3mm	26cm	LL / LH / TM
HC-MER0332	3mm	32cm	LL / LH / TM
HC-MER0426	4mm	26cm	LL / LH / TM
HC-MER0432	4mm	32cm	LL / LH / TM
HC-MER0526	5mm	26cm	LL / LH / TM
HC-MER0532	5mm	32cm	LL / LH / TM

BASKET

360° of extraction and 3 flared openings for large-volume liposuction procedures. These can be referred to as a "Flared Mercedes" cannula as well.

Model	Diameter	Length	Hub Options
HC-BAS0326	3mm	26cm	LL / LH / TM
HC-BAS0332	3mm	32cm	LL / LH / TM
HC-BAS0426	4mm	26cm	LL / LH / TM
HC-BAS0432	4mm	32cm	LL / LH / TM
HC-BAS0526	5mm	26cm	LL / LH / TM
HC-BAS0532	5mm	32cm	LL / LH / TM

MERCEDES PLUS (DOUBLE MERCEDES)

360° of extraction and 6 holes for high-volume liposuction procedures.

Model	Diameter	Length	Hub Options
HC-MER+0326	3mm	26cm	LL / LH / TM
HC-MER+0332	3mm	32cm	LL / LH / TM
HC-MER+0426	4mm	26cm	LL / LH / TM
HC-MER+0432	4mm	32cm	LL / LH / TM
HC-MER+0526	5mm	26cm	LL / LH / TM
HC-MER+0532	5mm	32cm	LL / LH / TM

CANDY CANE

360° of extraction for medium to high-volume liposuction procedures.

Model	Diameter	Length	Hub Options
HC-CC0326	3mm	26cm	LL / LH / TM
HC-CC0332	3mm	32cm	LL / LH / TM
HC-CC0426	4mm	26cm	LL / LH / TM
HC-CC0432	4mm	32cm	LL / LH / TM
HC-CC0526	5mm	26cm	LL / LH / TM
HC-CC0532	5mm	32cm	LL / LH / TM

LE PATTERNS



SPATULA

90° of extraction and a single hole for low to medium-volume liposuction procedures. Non-traumatic spatula tips are ideal for delicate areas like the face and neck.

Model	Diameter	Length	Hub Options
HC-SPA0215	2mm	15cm	LL / LH / TM
HC-SPA0315	3mm	15cm	LL / LH / TM
HC-SPA0415	4mm	15cm	LL / LH / TM
HC-SPA0515	5mm	15cm	LL / LH / TM

HUB OPTIONS



SPATULA 2-PORT

90° of extraction and 2 holes for low to medium-volume liposuction procedures. Non-traumatic spatula tips are ideal for delicate areas like the face and neck.

Model	Diameter	Length	Hub Options
HC-SP20215	2mm	15cm	LL / LH / TM
HC-SP20315	3mm	15cm	LL / LH / TM
HC-SP20415	4mm	15cm	LL / LH / TM
HC-SP20515	5mm	15cm	LL / LH / TM



MODERN SPIRAL

270° of extraction with multiple holes for high-volume aspiration. The Modern Spiral cannula is a modern alternative for a Tri-Port or Mercedes cannula.

Model	Diameter	Length	Hub Options
HC-MS0326	3mm	26cm	LL / LH / TM
HC-MS0332	3mm	32cm	LL / LH / TM
HC-MS0426	4mm	26cm	LL / LH / TM
HC-MS0432	4mm	32cm	LL / LH / TM
HC-MS0526	5mm	26cm	LL / LH / TM
HC-MS0532	5mm	32cm	LL / LH / TM



TRI-PORT

270° of extraction and 3 holes for high-volume liposuction procedures.

Model	Diameter	Length	Hub Options
HC-III0215	2mm	15cm	LL / LH / TM
HC-III0226	2mm	26cm	LL / LH / TM
HC-III0315	3mm	15cm	LL / LH / TM
HC-III0326	3mm	26cm	LL / LH / TM
HC-III0332	3mm	32cm	LL / LH / TM
HC-III0415	4mm	15cm	LL / LH / TM
HC-III0426	4mm	26cm	LL / LH / TM
HC-III0432	4mm	32cm	LL / LH / TM
HC-III0526	5mm	26cm	LL / LH / TM
HC-III0532	5mm	32cm	LL / LH / TM



TRI-PORT PLUS FOR LARGE VOLUME HARVESTING

270° of extraction and 3 holes for high-volume liposuction procedures.

Model	Diameter	Length	Hub Options
HC-III+0326	3mm	26cm	LL / LH / TM
HC-III+0332	3mm	32cm	LL / LH / TM
HC-III+0426	4mm	26cm	LL / LH / TM
HC-III+0432	4mm	32cm	LL / LH / TM
HC-III+0526	5mm	26cm	LL / LH / TM
HC-III+0532	5mm	32cm	LL / LH / TM

INJECTION & INFILT

MICRO INJECTION



STYLE 1

Model	Diameter	Length	Hub Options
HC-MIN11607	16ga	7cm	LUER LOCK
HC-MIN11609	16ga	9cm	LUER LOCK
HC-MIN11807	18ga	7cm	LUER LOCK
HC-MIN11809	18ga	9cm	LUER LOCK
HC-MIN11905	19ga	5cm	LUER LOCK
HC-MIN12003	20ga	3cm	LUER LOCK
HC-MIN12005	20ga	5cm	LUER LOCK



STYLE 2

Model	Diameter	Length	Hub Options
HC-MIN21607	16ga	7cm	LUER LOCK
HC-MIN21609	16ga	9cm	LUER LOCK
HC-MIN21807	18ga	7cm	LUER LOCK
HC-MIN21809	18ga	9cm	LUER LOCK



STYLE 3

Model	Diameter	Length	Hub Options
HC-MIN31607	16ga	7cm	LUER LOCK
HC-MIN31609	16ga	9cm	LUER LOCK
HC-MIN31807	18ga	7cm	LUER LOCK
HC-MIN31809	18ga	9cm	LUER LOCK



"V" DISSECTOR

Model	Diameter	Length	Hub Options
HC-MINV1215	12ga	15cm	LUER LOCK
HC-MINV1225	12ga	25cm	LUER LOCK
HC-MINV1415	14ga	15cm	LUER LOCK
HC-MINV1409	14ga	9cm	LUER LOCK
HC-MINV1607	16ga	7cm	LUER LOCK
HC-MINV1609	16ga	9cm	LUER LOCK
HC-MINV1807	18ga	7cm	LUER LOCK

MICRO ASPIRATION



MERCEDES

Model	Diameter	Length	Hub Options
HC-MER1215	12ga	15cm	LUER LOCK
HC-MER1225	12ga	25cm	LUER LOCK
HC-MER1415	14ga	15cm	LUER LOCK
HC-MER1425	14ga	25cm	LUER LOCK
HC-MER0315	3mm	15cm	LUER LOCK
HC-MER0325	3mm	25cm	LUER LOCK



FAT ASPIRATION CANNULA (FAC)

Model	Diameter	Length	Hub Options
HC-MAN1215	12ga	15cm	LUER LOCK
HC-MAN1220	12ga	20cm	LUER LOCK
HC-MAN1225	12ga	25cm	LUER LOCK
HC-MAN1415	14ga	15cm	LUER LOCK
HC-MAN1425	14ga	25cm	LUER LOCK

RATION CANNULAS

BODY TISSUE INJECTION

STYLE 1



Model	Diameter	Length	Hub Options
HC-MIN11215	12ga	15cm	LUER LOCK
HC-MIN11220	12ga	20cm	LUER LOCK
HC-MIN11225	12ga	25cm	LUER LOCK
HC-MIN11415	14ga	15cm	LUER LOCK
HC-MIN11420	14ga	20cm	LUER LOCK
HC-MIN11425	14ga	25cm	LUER LOCK

TISSUE TRANSFER

SOFT TISSUE TRANSFER SYSTEM

SYRINGE, LUER LOCK TO LUER LOCK



Model	Diameter
HC-LL3	3mm
HC-LL4	4mm

MICRO TRANSFER HUB SET



Model	Description
NFT-SET	Set of 3 1.2mm, 1.4mm & 2.4mm

TUMESCENT INFILTRATION

BODY ANESTHESIA NEEDLE



Model	Diameter	Length	Hub Options
HC-BAN1015	10ga	15cm	LUER LOCK
HC-BAN1032	10ga	32cm	LUER LOCK
HC-BAN1215	12ga	15cm	LUER LOCK
HC-BAN1225	12ga	25cm	LUER LOCK
HC-BAN1232	12ga	32cm	LUER LOCK
HC-BAN1415	14ga	15cm	LUER LOCK
HC-BAN1425	14ga	25cm	LUER LOCK
HC-BAN1432	14ga	32cm	LUER LOCK
HC-BAN1615	16ga	15cm	LUER LOCK

FACIAL ANESTHESIA NEEDLE



Model	Diameter	Length	Hub Options
HC-FAN1415	14ga	15cm	LUER LOCK
HC-FAN1615	16ga	15cm	LUER LOCK

TWIST LOCK



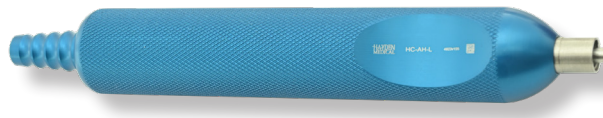
Model	Used with
HC-MJ-TL60	60cc Monoject Toomey Syringe
HC-BD-TL60	60cc BD Syringe
HC-MJ-TL35	35cc Monoject Toomey Syringe
HC-BT-TL20	20cc BD and 20cc Terumo Syringe
HC-BD-TL30	30cc BD Syringe
HC-BD-TL10	10cc BD Syringe
HC-MJ-TL10	10cc & 12cc Monoject Toomey Syringe

INFUSION HANDLE w/ ON/OFF CONTROL



Model	Description
HC-INFU-C-BLK	On/Off Control Infusion Handle for use w/ roller pump devices, 3/4" diameter

ASPIRATION HANDLES



Model	Description
HC-AH-S	Standard Aspiration Handle 3/4" diameter

INFUSION HANDLE



Model	Description
HC-INFU-NC-L	Standard Infusion Handle, no control, ideal for infusion needle, 1" diameter.

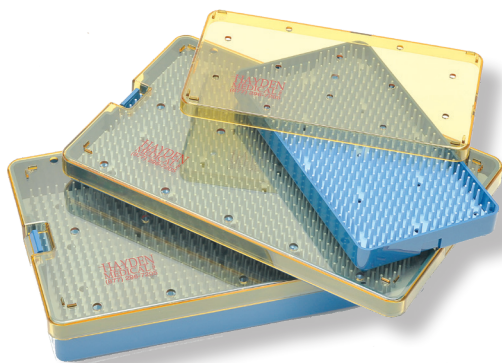
NEEDLE CONNECTOR



Model	Description
HC-NC	Needle Connector for Use w/ Luer Lock Cannula to Reusable Tubing

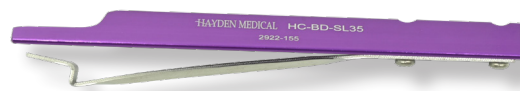
MICRO STERILIZATION TRAYS

- Autoclavable
- Silicone Finger-Tip Mats



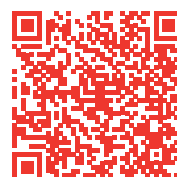
Model	Description
030-105	4" x 7-1/2" x 3/4"
030-105.5	4" x 7-1/2" x 1-1/2"
030-107	6" x 10" x 3/4"
030-108	6" x 10" x 1-1/2"
030-108D	6" x 10" x 1-1/2" Double-Decker
030-111	10" x 15" x 3/4"
030-112	10" x 15" x 1-1/2"

SNAPPER LOCKS



Model	Description
HC-BT-SL10	for 10cc BD
HC-MJ-SL10	for 10cc Monoject & 12cc Monoject Syringe
HC-BD-SL20	for 20cc BD Syringe
HC-MJ-SL20	for 20cc Monoject Syringe
HC-BD-SL30	for 30cc BD Syringe
HC-MJ-TL60	for 60cc Monoject Toomey Syringe
HC-MJ-SL35	for 35cc Monoject Syringe
HC-TR-SL60	for 60cc Terumo Syringe

SCAN TO SEE OUR
LIPOSUCTION INSTRUMENTS



AUTOLOGOUS FAT TRANSFER SET (FACE)

ORDER ENTIRE SET
HC-FACE

Model	Description
HC-MAN1215	Micro Aspiration Harvesting Cannula - 12ga x 15cm
HC-MIN11607	Style 1 Micro-Injector - 16ga x 7cm
HC-MIN21609	Style 2 Micro-Injector - 16ga x 9cm
HC-MIN31609	Style 3 Micro-Injector - 16ga x 9cm
HC-FAN1615	Facial Anesthesia Needle - 16ga x 15cm
HC-SL20	Snapper Lock for 20cc Syringe
NFT-SET	Micro Transfer Hub Set - ID 1.2mm, 1.4mm & 2.4mm



AUTOLOGOUS FAT TRANSFER SET (BREAST)

ORDER ENTIRE SET
HC-BRST

Model	Description
HC-BAN1215	Tumescent Infiltration Cannula - 12ga x 15cm
HC-III0315	Tri-Port Harvester - 3mm x 15cm
HC-MIN11215	Style 1 Micro-Injector - 12ga x 15cm
HC-SL60	Snapper Lock for 60cc Syringe
NFT-2.4	Transfer Hub, Female Luer Ends - ID 2.4mm



AUTOLOGOUS FAT TRANSFER SET (GLUTEAL)

ORDER ENTIRE SET
HC-GLUT

Model	Description
HC-MER0420	Mercedes Cannula - 4mm x 20cm
HC-MER0425	Mercedes Cannula - 4mm x 25cm
HC-MIN10315	Style 1 Injector - 3mm x 15cm
HC-MIN10320	Style 1 Injector - 3mm x 20cm
HC-BAN1225	Tumescent Infiltration Cannula - 12ga x 25cm



TUMESCENT INFILTRATION SET

ORDER ENTIRE SET
HC-TINF

Model	Description
HC-BAN1232	Tumescent Infiltration Cannula - 12ga x 32cm
HC-BAN1415	Tumescent Infiltration Cannula - 14ga x 15cm
HC-INFU-C-BLK	Infusion Handle with On/Off Control - Black



Outfit your surgical suite and procedure rooms with our wide range of surgical equipment. We offer major brands and can match your needs with multiple choices to suit your specific budget. We pride ourselves on the quality of our products, excellent customer service and service after the sale.

SURGICAL LIGHTING

0ALED070SC



0ALED0100DC



STAINLESS STEEL TABLES AND PROCEDURE CHAIRS



HCM731



HCM513



HCM520



ESC2

PATIENT MONITORS



i-EDM3-NS

MEDICATION FRIDGE



i-AFridgeR

DOCTOR'S STOOL



EDS-1060G

SURGICAL STOOL



S900-W

DEFIBRILLATORS, ELECTROSURGICAL UNITS, ENDOSCOPY EQUIPMENT, EXAM TABLES, MEDICAL STRETCHERS, PATIENT MONITORS, PROCEDURE TABLES, SURGICAL MICROSCOPES, SURGICAL LIGHTING, SURGICAL TABLES, WARMING CABINETS

Scan below to visit our website and purchase.

