

HAYDEN MEDICAL

A collection of our most popular...

Plastic Surgery Surgical Instruments



661.296.7200



www.haydenmedical.com



info@haydenmedical.com



FACE LIFTING/ NECK LIFTING

Ceramic Freeman Gorney Scissors



Freeman Gorney Facelift Scissors are used for delicate skin dissection on the face and neck areas. Commonly used to isolate skin flaps during plastic and general surgeries.

- SuperCut Technology For Atraumatic Dissection
- Ceramic coating strengthens the blades and keeps scissors sharper longer
- Ergonomically Spread Shanks For Comfortable Handling

Model	Description
500-952SCK	7-1/2", curved

Insulated Bayonet Forceps

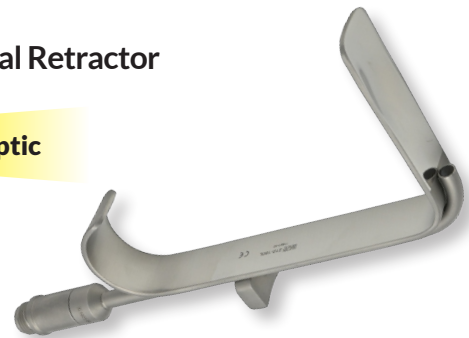


Insulated Bayonet Forceps have serrated tips and are used to help coagulate and grasp tissue. The long offset shaft and cathedral-style tips facilitate easier access to hard to reach tissue while the easy thumb pressing force allows for precision.

Model	Description
120-200NC	5-1/2", Lucae
120-172NC	6-1/4", Gruenwald (Jansen)
120-173NC	7-1/2", Gruenwald (Jansen)

Submental Retractor

Fiberoptic



Submental Fiber Optic Retractors are designed specifically for use with face, neck and breast procedures. These retractors feature a fiber optic light tube compatible with industry standard light sources.

Model	Description
210-180L	4-1/4", Tapered Blade

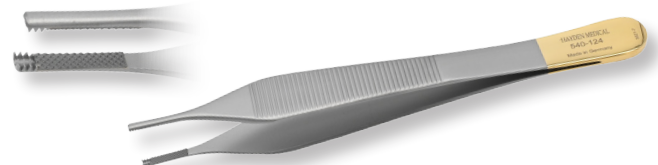
Loeffler Needle Holder



Loeffler Needle Holders feature a locking mechanism and diamond dust coated jaws. These are ideal for finer sutures.

Model	Description
620-124	Loeffler Needle Holder, 6' (15cm) delicate short jaws, diamond dusted

Adson-Brown Forceps

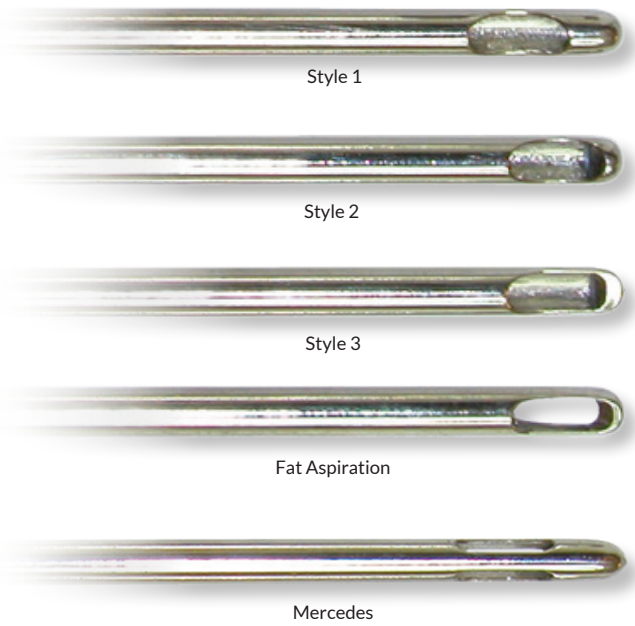


The unique tooth design reduces tissue slippage, patient tissue trauma and ensures comfortable usage in the surgeon's hands.

Model	Description
540-124	4-3/4", 3x3 teeth, straight, tungsten carbide jaws
120-124B	4-3/4", 7x7 side grasping teeth

LIPOSUCTION

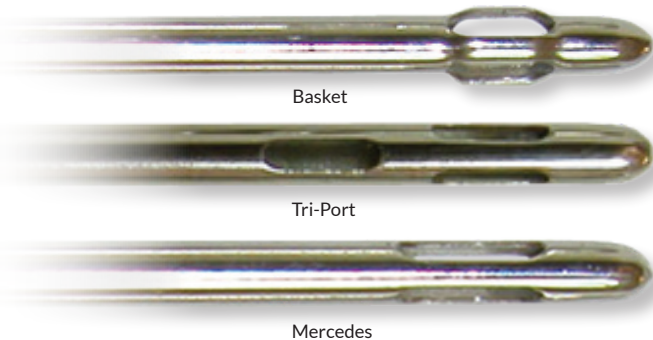
Micro Cannulas



Size Chart

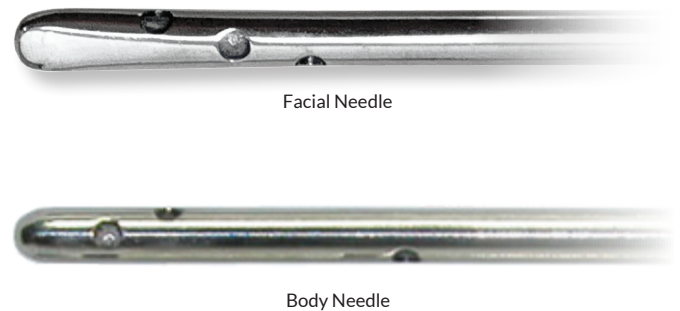
Model	Description
Style 1	16ga. Diameter, 7-9cm Length
Style 1	18ga. Diameter, 7-9cm Length
Style 2	16ga. Diameter, 7-9cm Length
Style 2	18ga. Diameter, 7-9cm Length
Style 3	16ga. Diameter, 7-9cm Length
Style 3	18ga. Diameter, 7-9cm Length
Fat Aspiration	12ga. Diameter, 10-25cm Length
Fat Aspiration	14ga. Diameter, 7-15cm Length
Mercedes	12ga. Diameter, 10-25cm Length
Mercedes	14ga. Diameter, 10-25cm Length
Mercedes	3mm Diameter, 15-25cm Length

Body Liposuction



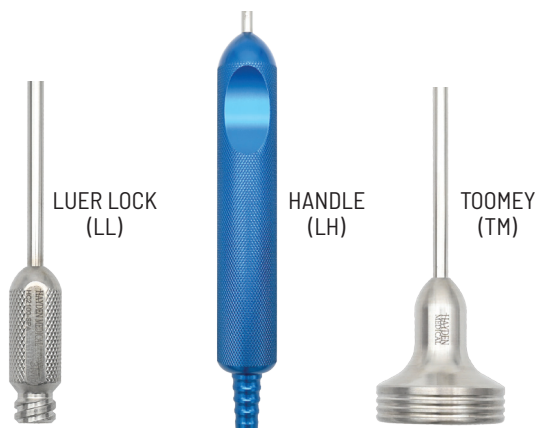
Model	Description
Basket	14ga.-5mm Diameter, 15-33cm Length
Tri-Port	14ga.-5mm Diameter, 15-33cm Length
Mercedes	14ga.-5mm Diameter, 15-33cm Length

Tumescent Infiltration



Model	Description
Facial Needle	14ga.-16ga. Diameter, 10-15cm Length
Body Needle	12ga.-14ga. Diameter, 15-33cm Length

Cannula Hub Options



Micro Aspirator

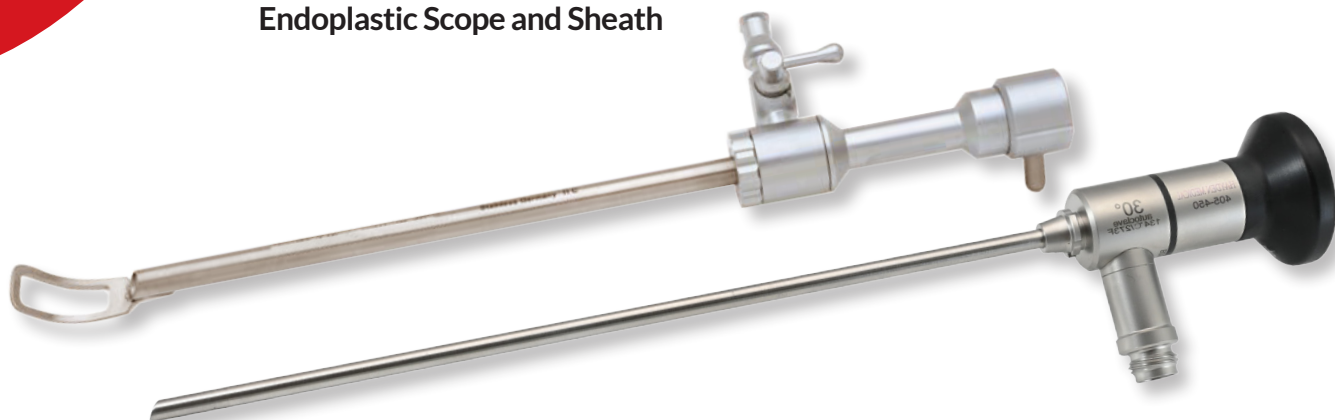


Model	Description
i-PM60	Power Vac Aspirator, continuous operation, 800cc



BROW LIFTING

Endoplastic Scope and Sheath

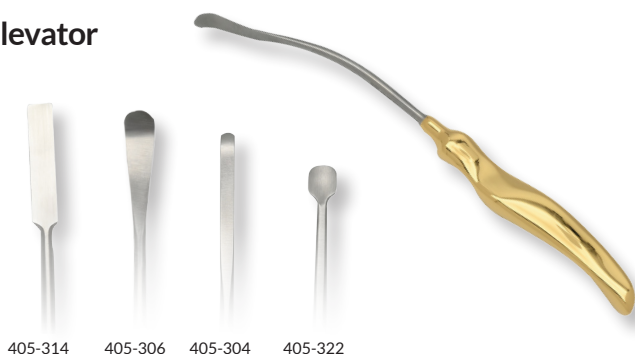


Fenestrated Tip & Rotating Stopcock

- Fenestrated tip for optimal viewing through scope
- Standard Storz-style connection
- Universal light cable connectivity
- Integrated irrigation

Model	Description
405-460	Fenestrated Tip & Rotating Stopcock
405-450	Telescope 30deg. Wide Angle 6", autoclavable

Elevator



405-314 405-306 405-304 405-322

SCAN FOR MORE STYLES



Brow Lift Elevators from Hayden Medical are designed for various stages of the endoscopic brow lift. Every variation features an ergonomic handle for accurate dissecting.

Endo-Plastic Grasper



Used in Endoscopic Brow Lift or Forehead Lift procedures, these inner forehead graspers have a bend in the shaft to contour to the patient's forehead.

Light Source



Model	Description
LS-200LED	LED Light Source, with multi turret

Light Cables



Model	Description
450-678/20	10' x 2.0mm
450-678/35	10' x 3.5mm
450-678/50	10' x 5.0mm

Light Cable Adapters

Light Source End



Model	Description
450-AC900	ACMI/Olympus
450-WO900	Wolf
450-ST900	Storz

Instrument End



Model	Description
450-AC800C	ACMI Plunger
450-WO800	Wolf
450-ST800	Storz

RHINOPLASTY

Micro Osteotome



Micro osteotomes allow for precise medial or lateral osteotomies during rhinoplasty surgery. Grooved handles facilitate better grip and help to reduce slippage while in the surgeon's hand. A sturdy back end of the osteotome will withstand the force of weighted mallets during the "tap, tap".

Model	Description
210-237	7" (18cm), 2mm wide, straight
210-240	7" (18cm), 4mm wide, straight

Fiber Optic Converse Nasal Retractor



The tapered blade is delicate for exposure of soft tissue. The ergonomic handle allows for less fatigue. Compatible with standard light sources with universal adaptor. Available in four different sizes.

Model	Description
210-182L	3-3/4", 10x16mm blade, fiber optic
210-183L	3-3/4", 12x30mm blade, fiber optic
210-184L	3-3/4", 12x40mm blade, fiber optic
210-185L	3-3/4", 12x50mm blade, fiber optic

Nasal Rasps



We offer double-ended nasal rasps that feature varying levels of coarseness from #1 to #10. Each model features two different tips to make covering a wide range of options possible.

- Tungsten Carbide Tips
- Ergonomic handle
- Long-lasting German Stainless Steel Construction

Model	Description
210-363	#1/2, very coarse
210-364	#3/4, medium / coarse
210-365	#5/6, medium
210-366	#7/8, fine / medium
210-367	#9/10, very fine

Cinelli Osteotome



Cinelli osteotomes with guards help to shape and shave away at the bony nasal hump. Guards help to protect and preserve delicate surrounding structures and tissue in the nose.

Model	Description
210-215	6-1/2" (16.3cm), 10mm cut, double guards
210-216	6-1/2" (16.3cm), 12mm cut, double guards
210-217	6-1/2" (16.3cm), 14mm cut, double guards

Tebbetts Style Self-Retaining Skin Hook



Tebbetts-Style Self-Retaining Skin Hooks are similar to Joseph Skin Hooks, but have a slit in the shaft of the hook. These slits hold a rubber band that can be stapled or sutured to a drape for a self-retaining function.

Model	Description	Model	Description
210-690	single hook	210-693	8mm double hook
210-691	2mm double hook	210-694	11mm double hook
210-692	5mm double hook	210-695	13mm double hook w ball ends



BREAST INSTRUMENTS



Ferriera Retractor

Hayden Medical's Ferriera Breast Retractor with light and suction has a smooth round end. Our lighted retractors have a universal connection for use with industry-standard fiber-optic cables. This breast retractor has multiple functions all in one unit.

Model	Description
405-110LS	70mm x 14mm, w/ Fiberoptic Light & Suction Tube
405-121LS	80mm x 16mm, w/ Fiberoptic Light & Suction Tube
405-143LS	100mm x 25mm, w/ Fiberoptic Light & Suction Tube
405-163LS	150mm x 25mm, w/ Fiberoptic Light & Suction Tube



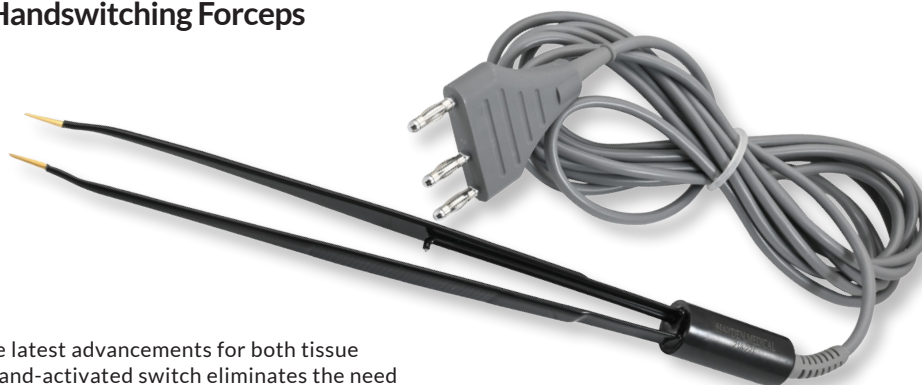
Tebbetts Retractor

Often used in breast procedures to allow for insertion of implants. V-shaped atraumatic tips help to secure and retract delicate breast tissues. This retractor also has a universal connection for use with industry-standard fiber-optic cables.

Model	Description
405-210LS	80mm x 16mm w/ Fiberoptic Light & Suction Tube
405-234LS	90mm x 24mm w/ Fiberoptic Light & Suction Tube
405-243LS	100mm x 25mm w/ Fiberoptic Light & Suction Tube
405-263LS	150mm x 25mm w/ Fiberoptic Light & Suction Tube

More styles available

Monopolar Handswitching Forceps



Our mono-polar forceps offer the latest advancements for both tissue dissection and hemostasis. The hand-activated switch eliminates the need for foot pedals. These long, insulated forceps are ideal for many different procedures.

- Fine tips for accuracy & speed of tissue dissection
- Hand-activated switch eliminates the need for foot pedals
- Attached cord can be used with most ESUs
- Autoclavable

Model	Description
218-221	9-1/2" smooth non stick tip, insulated, includes 10' (3.0M) cord

Freeman Cutting Areola Marker



Hayden Medical's Freeman Areola Markers have serrated edges for cutting or scoring the around the nipple during breast surgery procedures. Available in sizes 18mm to 45mm.

Model	Description
Single Ended	18mm, 22mm, 25mm, 30mm, 32mm, 34mm, 36mm, 38mm, 40mm, 42mm, 45mm
Double Ended	38/42mm, 42/45mm

Double Ended Tebbetts Retractor



Hayden Medical's Tebbetts Double-Ended Breast Retractors are made of German Stainless Steel and gold-coated for easy differentiation of tools on your mayo stand or instrument tray.

Model	Description
405-749	9", 37 x 70mm / 22 x 55mm blades
405-750	12-1/2", 37 x 70mm / 22 x 55mm blades

BODY INSTRUMENTS

Lockwood Flap Marker



Used for grasping and marking large tissue flaps before excision during abdominal surgery. Splayed shanks prevent thick flaps from obstructing the marker while closing, allowing optimal leverage when gripping.

Model	Description
405-612	12-3/4", w/ angled hinge, 9.5mm wide, without ratchet

Dissectors



Body flap dissectors help to dissect and elevate deep into hard-to-reach pockets. Multiple tip configurations are available to accommodate most needs for deep flap dissection, retraction and elevation.

Model	Description
405-726	Breast Dissector 13", rigid, angulated flat blade
405-719	Reynolds Transauxillary Breast Dissector 13", solid blade

Lockwood Under-Miner



The Lockwood underminer is a large dissector for undermining during abdominoplasty or tummy tuck surgeries. The large handle, blunt tip and thick blade provide stability and rigidity to the undermining, eliminating coiling and risk of perforation like traditional, thinner underminers.

Model	Description
405-400	

Salhana Retractor

Fiberoptic



Model	Description
210-758L	8-prong, with 8" x 2-3/8" blade
210-756L	8-prong, with 5" x 2-3/8" blade

Mayo-Hegar Needle Holder



Model	Description
520-314	5-1/2", serrated, tungsten carbide
520-320	8", serrated, tungsten carbide
520-331	12", serrated, tungsten carbide



BLEPHAROPLASTY

Par Scissors



Hayden Medical's PAR (Plastic and Reconstructive) Scissors have Super-Cut blades and are 100% Made in Germany. Stainless steel scissors with Super-Cut blades and a partially spatulated tip for dissecting, undermining and cutting all in one scissor.

- Used in Blepharoplasty, Facelifting, and Rhinoplasty
- Cutting of Delicate Tissue
- Dissection of Delicate Tissue

Model	Description
100-321SC	4-1/2", curved

Diamond Dust Castroviejo Suture Forceps



Delicate diamond dusted jaw for gripping delicate tissues or sutures. Large handle for more precise use.

Model	Description
120-952D	4 1/3", 1x2 teeth

Green Tissue Forceps



Often used in ophthalmic procedures to allow a clear view of the globe. T-shaped atraumatic tips for secure grasping of delicate eye tissues

Model	Description
120-894	4", 10mm wide teeth without lock
120-897	4", 5mm wide 8x9 teeth without lock

Guthrie Hooks



Used for retracting skin during dermatologic and plastic surgery procedures. Two hook widths available.

Model	Description
210-165	5", sharp double prongs 2.5mm wide
210-167	5", sharp double prongs 1.5mm wide

Desmarres Retractor non-conductive



Model	Description
210-194NC	11mm
210-195NC	13mm
210-196NC	15mm
210-197NC	17mm
210-198NC	double ended 8/10mm



Disposables



SIEC-3FHPB/D
3-Button Fingerswitch Wand
disposable (10pcs)



STEE301-2
Microincision Tip, 5mm Needle Tip
Length, 3cm Shaft Length (2pcs)



STEE305-2
Microincision Tip, 3cm Shaft Length,
45 degree Angle (2pcs)



STEE328-2
Microincision Tip, 2.5cm Shaft
Length, Curved (2pcs)



SST-W-25
Fine Wire, 3cm Shaft Length (25pcs)
Hex Shaft



SST-B3-25
2mm Ball, 3cm Shaft Length (25pcs)
Hex Shaft



SST-S-25
Spatula, 3cm Shaft Length (25pcs)
Hex Shaft



SST-L5-25
5mm Loop, 3cm Shaft Length (25pcs)
Hex Shaft



SST-L10-25
10mm Loop, 3cm Shaft Length
(25pcs) Hex Shaft



SBN-25
Broad Needle (25pcs) Hex Shaft



SPIN-25
1/8" Pin Tip (25pcs) Hex Shaft



SVT-25
Multi-Glide Tip (25pcs) Hex Shaft



BIPOLAR MCPHERSON FORCEPS
218-002SS
0.25mm tips, non-insulated, 3-3/10"



BIPOLAR JEWELER FORCEPS
218-004NS
0.25mm tips, insulated, non stick, 4-3/4"



BIPOLAR ADSON FORCEPS
218-010NS
1mm tips, insulated, non stick, 4-3/4"



BIPOLAR CABLE
SIEC-JX/B
reuseable
SIEC-DJX
single use



FLEXIBLE NEUTRAL PLATE
SIEC-NP
reuseable



The Technology

As the developer of 4.0MHz RF surgical technology, Mr. Alan Ellman has created Soniquance to provide physicians with surgical precision, versatility, and safety unmatched by other electrosurgical and laser technologies. Using a 4.0MHz output frequency that is over 8 times greater than that of electrosurgical devices, Soniquance generators create microscopic lateral heat while cutting and coagulating, thereby protecting surrounding tissue from unwanted thermal injury. The result is improved healing results with fewer complications typically caused by excess lateral heat.

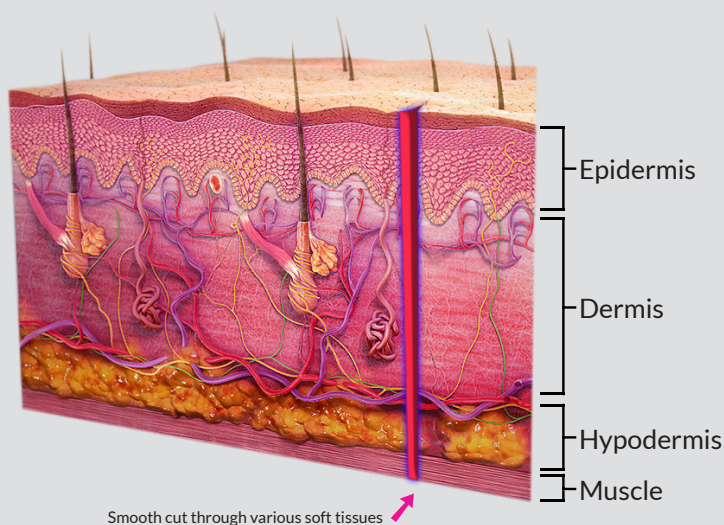
Soniquance represents Alan Ellman's return to office and hospital-based surgical specialties with new technology and brings coupled 4.0 MHz and 1.7 MHz RF technology into the 21st century. This new technology introduces clean, smooth high frequency waveforms for improved monopolar, bipolar and introducing Bipolar Turbo modalities.

SmoothWave i200

4.0MHz RF technology with Bipolar Turbo and Tissue Matching Intelligence provides greater surgical precision and soft tissue preservation.



BIPOLAR TURBO & TISSUE MATCHING INTELLIGENCE



Soniquance has evolved Smoothwave technology to include Bipolar Turbo for the coagulation of larger bleeding vessels and bipolar dissection.

Soniquance's SmoothWave Tissue Matching Technology ensures a smooth cut through various tissue types by adapting RF modes according to the tissue's water content.

The Features

- RF Filtering that automatically matches tissue impedance from 50-2000 ohms thereby providing consistent results through various soft tissue (skin, fat, mucosa, gingiva, etc..)
- Pulse Width Modulation that produces pure clean waveforms for Cut, Blend, and Hemostasis settings
- Unmatched precision and control
- Three distinct modalities: Monopolar, Bipolar, Bipolar TURBO
- Significantly less heat spread compared to traditional electrosurgical devices
- Ease of use

The Benefits

- Revenue generating office and hospital based procedures
- Versatility, efficacy, and precision in even the finest of tissues
- Time saving
- Less heat spread = faster and better quality healing results
- No wound dehiscence
- Less scarring
- Clean biopsy specimens

Multiple tip options available. See page 9



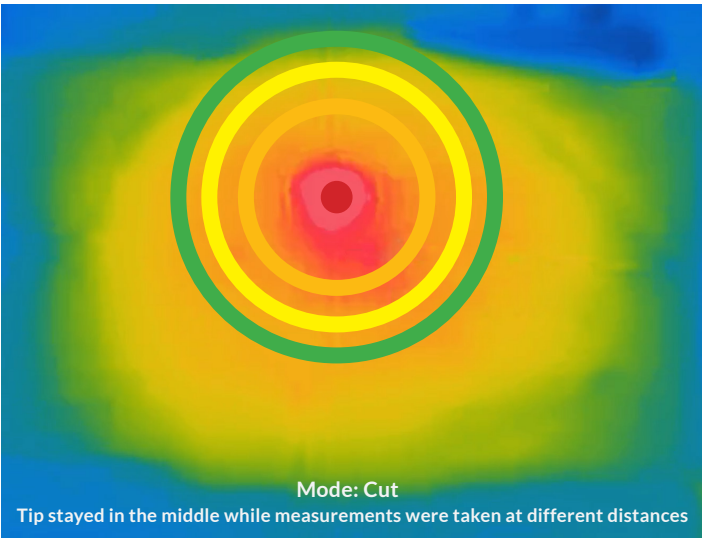
RADIO FREQUENCY (RF) TECHNOLOGY

SURGICAL PRECISION & TISSUE PRESERVATION

Temperature Study*

In this study the temperature at the ball tip of the electrode is measured by a thermocouple touching the electrode tip for a fraction of a second. The temperature gathered for the 3mm ball probe tip was 70°C. During this study, the ball probe was held in one place or slowly moved in circular motions.

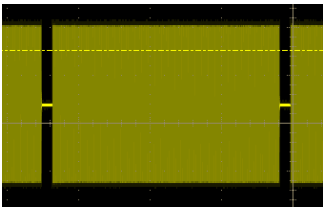
The results of this heat spread study shows that with the Smoothwave i200 the tissue temperature drop at distances of 1mm, 2mm and 3mm from the tip is dramatic regardless of the power setting on the machine. This study represents settings ranging from 15-30. Therefore less tissue “charring” is seen with the Smoothwave i200, compared to other generators when used at regular power settings. This holds true for results achieved with Soniquence tips.



Power Settings		15	20	25	30
Distance	Tip	70.7	70.7	70.7	70.7
	1mm	49.4	49.6	49.6	49.9
	2mm	40	41.2	43.9	46.8
	3mm	38.6	39.4	42.3	43.8
Temperature		Celsius			

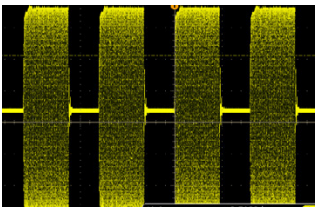
*Data on file

Cut Pure Cut Waveform



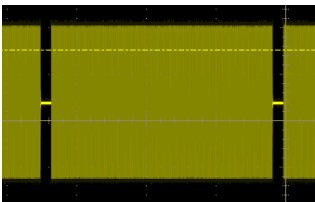
- Least lateral heat
- Preferable for skin incisions
- Biopsy specimens
- First intention healing

Blend Cut with Coagulation Waveform



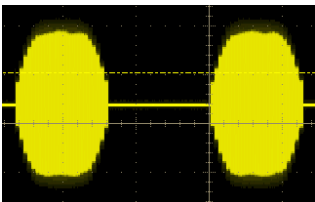
- Tissue dissection
- Tissue shaving (lesion removal, etc..)
- Simultaneous hemostasis

Bipolar TURBO



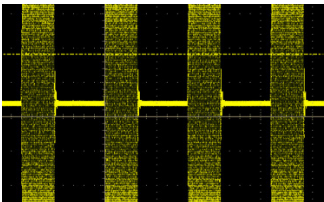
- Coagulation of larger bleeding vessels
- Bipolar dissection

Bipolar Pinpoint Coagulation



- Ideal for coagulation in and around critical anatomy

Hemo Coagulation



- Hemostasis of active bleeding
- Treatment of telangiectasia (spider veins)
- Epilation of hair and eye lashes

Soniquence RF can be used to treat Conjunctivochalasis

by contracting redundant or loose conjunctiva.

This procedure is relatively short and a list of CPT codes can be found below:

Code	Eye
H11.821	right
H11.822	left
H11.823	bilateral
H11.829	unspecified eye

View the CCH procedure here:



View a blepharoplasty with Soniquence here:





SURGICAL SUITE EQUIPMENT

Outfit your surgical suite and procedure rooms with our wide range of new and refurbished equipment. We offer major brands and can match your needs with multiple choices to suit your specific budget. We pride ourselves on the quality of our products, excellent customer service and service after the sale.

SURGICAL LIGHTING

QALED070SC



QALED0100DC



STAINLESS STEEL TABLES AND STANDS

HCM731



HCM513



HCM520



PROCEDURE CHAIRS

ESC2



PATIENT MONITORS



TABLE TOP AUTOCLAVES



DOCTOR'S STOOL

EDS-1060G



SURGICAL STOOL

S900-W



ANESTHESIA MACHINES, AUTOCLAVES, SURGICAL C-ARMS, C-ARM TABLES, DEFIBRILLATORS, ELECTROSURGICAL UNITS, ENDOSCOPY EQUIPMENT, EXAM TABLES, MEDICAL STAINLESS STEEL, MEDICAL STRETCHERS, PATIENT MONITORS, PROCEDURE TABLES, SURGICAL MICROSCOPES, SURGICAL LIGHTING, SURGICAL TABLES, WARMING CABINETS

Scan below to visit our website and purchase.

