



Plastics & Cosmetic Surgical Instrument Highlights

HAYDEN MEDICAL

Precision Craftsmanship
Family Owned Passion



661-296-7200



www.haydenmedical.com



info@haydenmedical.com

Company Message



TOM OCASEK
Logistics Manager



HAYDEN CLELLAND
VP Sales & Marketing



SCOTT CLELLAND
Founder, CEO

Hayden Medical is the source for high quality German surgical instruments at reasonable prices. Why buy from the last supplier who charged your hospital, office or clinic a premium, when you can get your best deal right here with Hayden Medical.

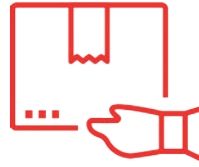
Save money today by purchasing from Hayden Medical for all of your specialty plastic and cosmetic surgery instrument needs.

We can personalize your instruments with anything from plain text to the surgery center's logo or the surgeon's signature with our laser marking system. With over 50 years of combined surgical instrument experience, we know which instruments can fit your needs for any cosmetic or plastic surgery procedure.

We will chase down your hard-to-find items and take the guesswork out of your day. High quality German instrumentation, great service and affordable pricing is our specialty.

If you've used Hayden instruments for years or are a first time customer, you will see and feel the difference every time one of our instruments are in your hands.

RETURNED GOODS POLICY



All returns must be accompanied by a Returned Goods Authorization number, available by calling our Customer Service Department.

THE FOLLOWING INFORMATION IS NEEDED TO REQUEST AUTHORIZATION FOR A RETURN.

- REASON FOR RETURN
- DATE OF PURCHASE
- INVOICE OR PO NUMBER
- PRODUCT NUMBER AND SIZE
- QUANTITY TO RETURN

All authorized returns must be made within thirty (30) days of the invoice date and accompanied by the appropriate purchase order number and Returned Goods Authorization number.

ALLOWABLE SCHEDULE FOR AUTHORIZED RETURN.

- Products processed in error by Hayden Medical, Inc. will be credited in full
- Defective product will be credited in full
- Unless defective or shipped in error, any return accepted is subject to up to a 25% restocking fee (minimum of \$10.00)
- All returned items are subject to Hayden Medical, Inc. inspection and acceptance
- Product must be shipped prepaid

NON-RETURNABLE, OTHER THAN FOR MANUFACTURING DEFECT.

- Engraved instruments or instruments etched or labeled by the hospital, surgery center or surgeon's office
- Products damaged beyond repair or refurbishment or not in saleable condition
- Instruments returned more than thirty (30) days after invoice date
- Custom, laser marked, special or modified items
- Disposable items and Cannulas

Used products must be returned sterile wrapped or they will not be accepted.



SEND ALL RETURNS TO:
19425 Soledad Cyn. Road, #411
Santa Clarita, CA 91351



Preservation Rhinoplasty



Converse and Convex saws for preservation rhinoplasty are precision crafted in Germany with thinner saw edges to provide more precise osteotomies.

Model	Description
210-312	Convex Transverse Saw
210-313	Concave Radix Saw

Diamond-Tip Spreader



The Diamond-Head face spreader is a revision of a classic face spreading instrument. It is now modified with a speculum-style handle to reduce surgeon fatigue with repeated spreading and dissection of facial flaps.

Model	Description
405-429	Diamond-Tip Spreader, Squeeze Grip

Ceramic Freeman-Kaye Facelift Scissors



Freeman Kaye Facelift Scissors are used for delicate skin dissection on the face and neck areas. Commonly used to isolate skin flaps during plastic and general surgeries. Spread open shanks conform to normal resting position of the hand thus improving control and reducing fatigue. The ceramic coating maintains sharpness for better cutting of tissues.

Model	Description
500-926SCK	supercut, ceramic, curved, w/ offset hand rings, 7"

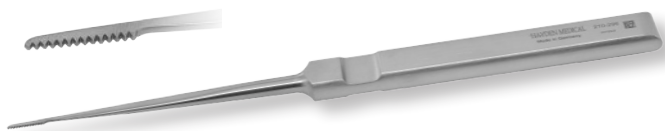
Cartilage Grafting Block



Hayden Medical's new Cartilage Grafting Block has 6 grooved inserts with 4 varying thicknesses to aid in sizing cartilage grafts for nasal surgery.

Model	Description
194-410	thicknesses of 0.5mm-2.0mm, Delrin

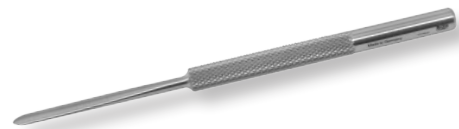
Micro Saw



Micro Saws for rhinoplasty are a new tool for preservation rhinoplasty techniques. They allow for finer and more precise osteotomies than traditional saws.

Model	Description
210-296	Micro Saw

Micro Inserter



The Micro Inserter for nasal surgery is most often used for inserting rim grafts. These offer an alternate approach to using forceps to insert rim grafts.

Model	Description
210-297	Micro Inserter

Ceramic Freeman Gorney Scissors



Freeman Gorney Facelift Scissors are used for delicate skin dissection on the face and neck areas. Commonly used to isolate skin flaps during plastic and general surgeries.

- SuperCut Technology For Atraumatic Dissection
- Ceramic coating strengthens the blades and keeps scissors sharper longer
- Ergonomically Spread Shanks For Comfortable Handling

Model	Description
500-952SCK	curved, 7-1/2"

Insulated Bayonet Forceps

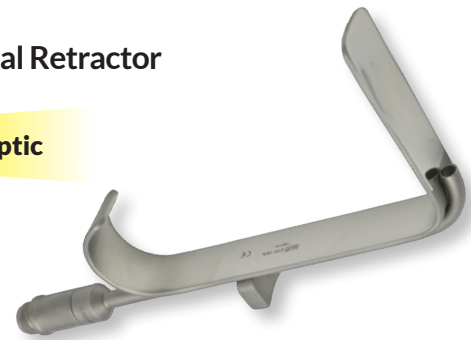


Insulated Bayonet Forceps have serrated tips and are used to help coagulate and grasp tissue. The long offset shaft and cathedral-style tips facilitate easier access to hard to reach tissue while the easy thumb pressing force allows for precision.

Model	Description
120-200NC	Lucae, 5-1/2"
120-172NC	Gruenwald (Jansen), 6-1/4"
120-173NC	Gruenwald (Jansen), 7-1/2"

Submental Retractor

Fiberoptic



Submental Fiber Optic Retractors are designed specifically for use with face, neck and breast procedures. These retractors feature a fiber optic light tube compatible with industry standard light sources.

Model	Description
210-180L	tapered blade, 4-1/4"

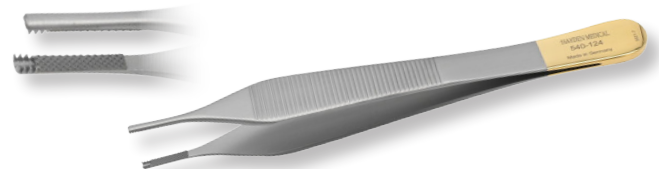
Loeffler Needle Holder



Loeffler Needle Holders feature a locking mechanism and diamond dust coated jaws. These are ideal for finer sutures.

Model	Description
620-124	Loeffler Needle Holder, delicate short jaws, diamond dusted, 6"

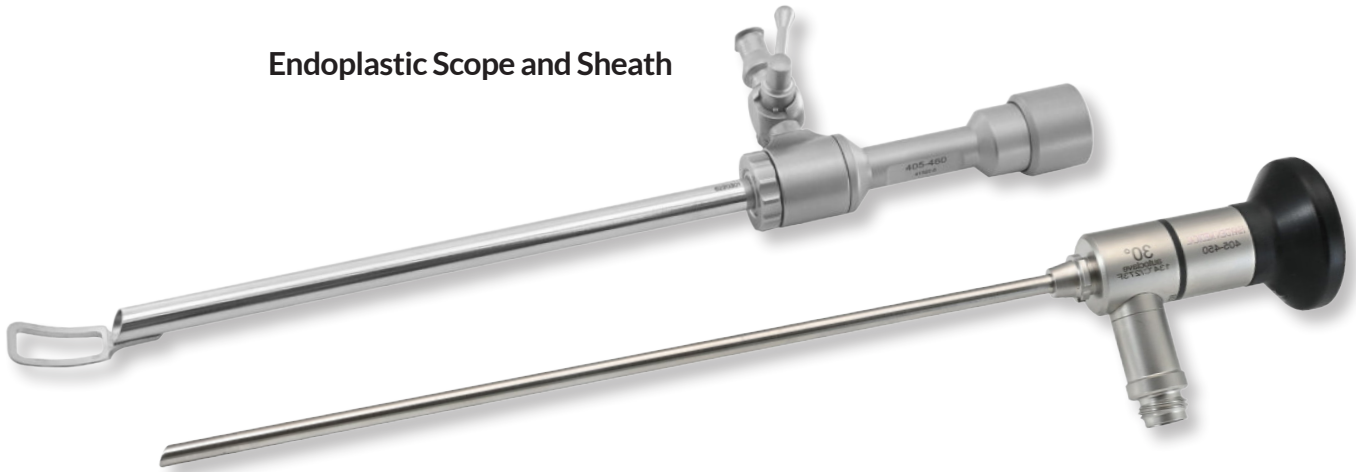
Adson-Brown Forceps



The unique tooth and handle design reduces tissue slippage, patient tissue trauma and ensures comfortable usage in the surgeon's hands.

Model	Description
540-124	3x3 teeth, tungsten carbide jaws, 4-3/4"
540-128	4x4 teeth, tungsten carbide jaws, 6"

Endoplastic Scope and Sheath



Fenestrated Tip & Rotating Stopcock

- Fenestrated tip for optimal viewing through scope
- Standard Storz-style connection
- Universal light cable connectivity
- Integrated irrigation

Model	Description
405-460	Fenestrated Tip & Rotating Stopcock
405-450	Telescope 30deg. Wide Angle 6", autoclavable

Elevator



Brow Lift Elevators from Hayden Medical are designed for various stages of the endoscopic brow lift. Every variation features an ergonomic handle for accurate dissecting.

SCAN FOR MORE STYLES



Endo-Plastic Grasper



Used in Endoscopic Brow Lift or Forehead Lift procedures, these inner forehead graspers have a bend in the shaft to contour to the patient's forehead.

Light Source



Model	Description
LS-200LED	LED Light Source, with multi turret

Light Cables



Model	Description
450-678/20	10' x 2.0mm
450-678/35	10' x 3.5mm
450-678/50	10' x 5.0mm

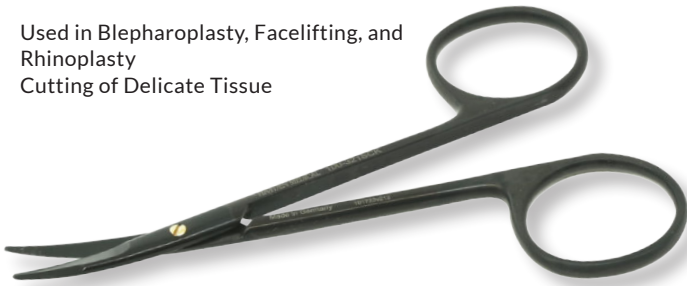
Light Cable Adapters



Model	Description	Model	Description
450-AC900	ACMI/Olympus	450-AC800C	ACMI Plunger
450-WO900	Wolf	450-WO800	Wolf
450-ST900	Storz	450-ST800	Storz

Par Scissors

- Used in Blepharoplasty, Facelifting, and Rhinoplasty
- Cutting of Delicate Tissue



Hayden Medical's PAR (Plastic and Reconstructive) Scissors have SuperCut blades and are 100% Made in Germany. Stainless steel scissors with SuperCut blades and a partially spatulated tip for dissecting, undermining and cutting all in one scissor.

Model	Description
100-321SC	supercut, curved, 4-1/2"
100-321SCK	ceramic, supercut, curved, 4-1/2"
500-321	tungsten carbide, curved, serrated, 4-1/2"

Ceramic Stevens Tenotomy Scissors



Ceramic Tenotomy Scissors are an improvement on a frequently used instrument. We added a ceramic coating as well as SuperCut blades for more precise cutting and reduced tissue slippage.

Model	Description
100-403SCK	supercut, ceramic, curved sharp points, 4-1/3"
100-404SCK	supercut, ceramic, curved blunt points, 4-1/3"

Diamond Dust Castroviejo Suture Forceps



Delicate 0.5mm diamond dusted jaw for gripping delicate tissues or sutures. Large handle for more precise use.

Model	Description
120-952D	0.5mm, 1x2 teeth, 4 1/3"

Green Tissue Forceps



Often used in ophthalmic procedures to allow a clear view of the globe with slightly vaulted grasping edges. T-shaped atraumatic tips help to securely grasp delicate tissue around the eye.

Model	Description
120-894	10mm wide teeth without lock, 4"
120-897	5mm wide 8x9 teeth without lock, 4"

Guthrie Hooks



Used for retracting skin during dermatologic and plastic surgery procedures. Two hook widths available.

Model	Description
210-165	sharp double prongs 2.5mm wide, 5"
210-167	sharp double prongs 1.5mm wide, 5"

Desmarres Retractor non-conductive



Model	Description
210-194NC	11mm
210-195NC	13mm
210-196NC	15mm
210-197NC	17mm
210-198NC	double ended 8/10mm

Tungsten Needle Drivers



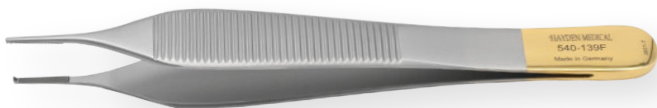
Model	Description
520-040	Baby Webster, serrated jaws, delicate, , 4-3/4"
520-042	Baby Webster, smooth jaws, delicate, 4-3/4"
520-060	Webster, serrated jaws, 5-1/4"
520-070	Webster, smooth jaws, 5-1/4"
520-075	Halsey, serrated jaws, 5"
520-080	Halsey, smooth jaws, 5"

Bishop-Harmon Suture Forceps



Model	Description
120-866	.5mm, serrated
120-865	.6mm, 1x2 teeth with tying platform
120-868	.7mm, 1x2 teeth
120-869	.9mm, 1x2 teeth

Adson Forcep with Tungsten Insert



Model	Description
540-136	Tissue, 1x2 teeth, serrated, 1.4mm standard, 4-3/4"
540-139F	Tissue, 1x2 teeth, serrated, 1mm delicate, 4-3/4"
540-141	Tissue, 1x2 teeth, serrated platform, 1.4mm , 6"
540-116	Dressing, smooth, 1.4mm standard, 4-3/4"
540-117	Dressing, serrated, 1.4mm standard, 4-3/4"
540-140	Dressing, serrated, 1.4mm standard, 6"

Ocular Laser Shield with Suction Cup



Model	Description
OP21-261P	X-Small 22.0 x 19.5mm Pair
OP21-262P	Small 24.0 x 21.0mm Pair
OP21-264P	Medium 25.5 x 22.0mm Pair
OP21-266P	Large 26.5 x 23.0mm Pair

Ocular Laser Shield with Handle



Model	Description
OP21-261HP	X-Small 22.0 x 19.5mm Pair
OP21-262HP	Small 24.0 x 21.0mm Pair
OP21-264HP	Medium 25.5 x 22.0mm Pair
OP21-266HP	Large 26.5 x 23.0mm Pair

Plastic Ocular Shield with Suction Cup



Model	Description
OP23-201BP	X-Small 23.5 x 21.5mm Pair
OP23-202BP	Small 26.0 x 23.5mm Pair
OP23-204BP	Medium 27.5 x 24.5mm Pair
OP23-206BP	Large 28.5 x 25.5mm Pair

Plastic Ocular Shield with Handle



Model	Description
OP23-201BHP	X-Small 23.5 x 21.5mm Pair
OP23-202BHP	Small 26.0 x 23.5mm Pair
OP23-204BHP	Medium 27.5 x 24.5mm Pair
OP23-206BHP	Large 28.5 x 25.5mm Pair

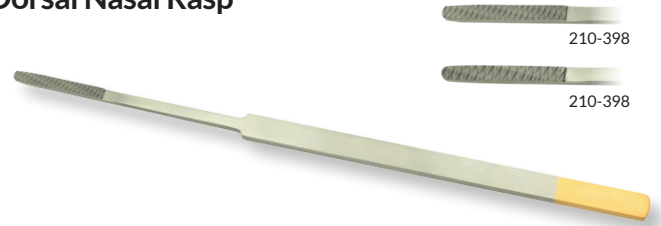
Micro Osteotome



Micro Osteotomes allow for precise medial or lateral osteotomies during rhinoplasty surgery. Grooved handles facilitate better grip and help to reduce slippage while in the surgeon’s hand. A sturdy back end of the osteotome will withstand the force of weighted mallets during the “tap, tap”.

Model	Description
210-236	1mm wide, straight, 7”
210-237	2mm wide, straight, 7”
210-240	4mm wide, straight, 7”

Dorsal Nasal Rasp



Dorsal Nasal Rasps have a 2mm width for more precise rasping. Available in 2 levels of coarseness.

Model	Description
210-398	grit #8, 2mm working end, 6-1/2”
210-399	grit #9, 2mm working end, 6-1/2”

Double Ended Nasal Rasps



We offer double-ended nasal rasps that feature varying levels of coarseness from #1 to #10. Each model features two different tips to make covering a wide range of options possible.

- Tungsten Carbide Tips
- Ergonomic handle
- Long-lasting German Stainless Steel Construction

Model	Description
210-363	#1/2, very coarse
210-364	#3/4, medium / coarse
210-365	#5/6, medium
210-366	#7/8, fine / medium
210-367	#9/10, very fine

Cinelli Osteotome



Cinelli Osteotomes with guards help to shape and shave away at the bony nasal hump. Guards help to protect and preserve delicate surrounding structures and tissue in the nose.

Model	Description
210-215	10mm cut, double guards, 6-1/2”
210-216	12mm cut, double guards, 6-1/2”
210-217	14mm cut, double guards, 6-1/2”

Tebbetts Style Self-Retaining Skin Hook



Tebbetts-Style Self-Retaining Skin Hooks are similar to Joseph Skin Hooks, but have a slit in the shaft of the hook. These slits hold a rubber band that can be stapled or sutured to a drape for a self-retaining function.

Model	Description	Model	Description
210-690	single hook	210-693	8mm double hook
210-691	2mm double hook	210-694	11mm double hook
210-692	5mm double hook	210-695	13mm double hook with ball ends

Jansen-Middleton Septum Forceps



Jansen-Middleton Septum Forceps from Hayden Medical have been refined to lower the instrument profile in the nose. This lack of bulk helps to easier punch septal cartilage compared to standard versions.

Caplan Nasal Bone Scissors



Caplan Nasal Bone Scissors offer an alternate approach to cutting nasal bone and cartilage. Serrated blades and double action jaws can aid in cutting bone and cartilage easier than standard ring-handled scissors.

Model	Description
200-558	double action, through-cutting 13 x 3mm, 6-3/4"

Model	Description
210-622	double action, serrated blades, 8"

Fiber Optic Converse Nasal Retractor



Fiberoptic

The tapered blade is delicate for exposure of soft tissue. The ergonomic handle allows for less fatigue. Compatible with standard light sources with universal adaptor. Available in four different sizes.

Wilmer (Converse) Scissors



Wilmer nasal scissors have angled tips for easier visualization of nasal structures while dissecting. SuperCut blades help to reduce blade slippage while dissecting and cutting slippery nasal cartilage.

Model	Description
210-182L	10x16mm blade, fiber optic, 3-3/4"
210-183L	12x30mm blade, fiber optic, 3-3/4"
210-184L	12x40mm blade, fiber optic, 3-3/4"
210-185L	12x50mm blade, fiber optic, 3-3/4"

Model	Description
100-472SC	supercut, angled on flat, 4"

Ballenger Swivel Knife



Ballenger Swivel Knives for cartilage grafts are available in varying blade widths and are available in a straight or bayonet-style shaft.

Model	Description
200-222	3mm, bayonet, 7-3/4"
200-224	4mm, bayonet, 7-3/4"

Weighted Nasal Retractors



Weighted Nasal Retractors for open rhinoplasty are often used to free a surgeon's hand to retract the nasal skin for better viewing of the internal nasal structures.

Model	Description
210-771	Desmarres Weighted Nasal Retractor 12mm
210-772	Gruber Columella Retractor with Weight



Ferriera Retractor

Fiberoptic

Hayden Medical's Ferriera Breast Retractor with light and suction has a smooth round end. Our lighted retractors have a universal connection for use with industry-standard fiber-optic cables. This breast retractor has multiple functions all in one unit.

Model	Description
405-110LS	70mm x 14mm, w/ Fiberoptic Light & Suction Tube
405-121LS	80mm x 16mm, w/ Fiberoptic Light & Suction Tube
405-143LS	100mm x 25mm, w/ Fiberoptic Light & Suction Tube
405-163LS	150mm x 25mm, w/ Fiberoptic Light & Suction Tube



Tebbetts Retractor

Fiberoptic

Often used in breast procedures to allow for insertion of implants. V-shaped atraumatic tips help to secure and retract delicate breast tissues. This retractor also has a universal connection for use with industry-standard fiber-optic cables.

Model	Description
405-210LS	80mm x 16mm w/ Fiberoptic Light & Suction Tube
405-234LS	90mm x 24mm w/ Fiberoptic Light & Suction Tube
405-243LS	100mm x 25mm w/ Fiberoptic Light & Suction Tube
405-263LS	150mm x 25mm w/ Fiberoptic Light & Suction Tube

More styles available

Monopolar Handswitching Forceps



Our Monopolar forceps offer the latest advancements for both tissue dissection and hemostasis. The hand-activated switch eliminates the need for foot pedals. These long, insulated forceps are ideal for many different procedures.

- Fine tips for accuracy & speed of tissue dissection
- Hand-activated switch eliminates the need for foot pedals
- Attached cord can be used with most ESUs
- Autoclavable

Model	Description
218-221	9-1/2" smooth non stick tip, insulated, includes 10' (3.0M) cord

Freeman Cutting Areola Marker



Hayden Medical's Freeman Areola Markers have serrated edges for cutting or scoring the around the nipple during breast surgery procedures. Available in sizes 18mm to 45mm.

Model	Description
Single Ended	18mm, 22mm, 25mm, 30mm, 32mm, 34mm, 36mm, 38mm, 40mm, 42mm, 45mm
Double Ended	38/42mm, 42/45mm

Double Ended Breast Retractor



Double Ended Breast retractors are often used for retraction during breast dissection or implant insertion/removal.

Model	Description
405-749	37 x 70mm / 22 x 55mm blades, 9"
405-750	37 x 70mm / 22 x 55mm blades, 12-1/2"

Lockwood Flap Marker



Used for grasping and marking large tissue flaps before excision during abdominal surgery. Splayed shanks prevent thick flaps from obstructing the marker while closing, allowing optimal leverage when gripping.

Model	Description
405-612	with angled hinge, 9.5mm wide, without ratchet, 12-3/4"

Dissectors



Body flap dissectors help to dissect and elevate deep into hard-to-reach pockets. Multiple tip configurations are available to accommodate most needs for deep flap dissection, retraction and elevation.

Model	Description
405-726	Breast Dissector, rigid, angulated flat blade, 13"
405-719	Reynolds Transaxillary Breast Dissector, solid blade, 13"

Lockwood Under-Miner

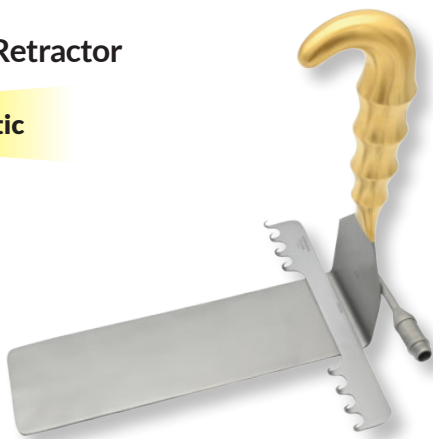


The Lockwood Under-Miner is a large dissector for undermining during abdominoplasty or tummy tuck surgeries. The large handle, blunt tip and thick blade provide stability and rigidity to the undermining, eliminating coiling and risk of perforation like traditional, thinner underminers.

Model	Description
405-400	38cm shaft length, 3cm lift

Saldhana Retractor

Fiberoptic



Model	Description
210-758L	8-prong, with 8" x 2-3/8" blade
210-756L	8-prong, with 5" x 2-3/8" blade

Mayo-Hegar Needle Holder



Model	Description
520-314	serrated, tungsten carbide, 5-1/2"
520-320	serrated, tungsten carbide, 8"
520-331	serrated, tungsten carbide, 12"



The Technology

As the developer of 4.0MHz RF surgical technology, Mr. Alan Ellman has created Soniquence to provide physicians with surgical precision, versatility, and safety unmatched by other electrosurgical and laser technologies. Using a 4.0MHz output frequency that is over 8 times greater than that of electrosurgical devices, Soniquence generators create microscopic lateral heat while cutting and coagulating, thereby protecting surrounding tissue from unwanted thermal injury. The result is improved healing results with fewer complications typically caused by excess lateral heat.

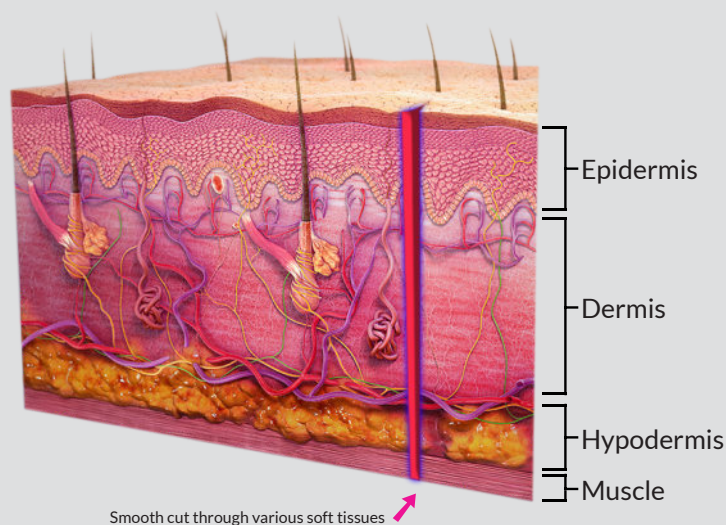
Soniquence represents Alan Ellman's return to office and hospital-based surgical specialties with new technology and brings coupled 4.0 MHz and 1.7 MHz RF technology into the 21st century. This new technology introduces clean, smooth high frequency waveforms for improved monopolar, bipolar and introducing Bipolar Turbo modalities.

SmoothWave i200

4.0MHz RF technology with Bipolar Turbo and Tissue Matching Intelligence provides greater surgical precision and soft tissue preservation.



BIPOLAR TURBO & TISSUE MATCHING INTELLIGENCE



Soniquence has evolved Smoothwave technology to include Bipolar Turbo for the coagulation of larger bleeding vessels and bipolar dissection.

Soniquence's SmoothWave Tissue Matching Technology ensures a smooth cut through various tissue types by adapting RF modes according to the tissue's water content.

The Features

- RF Filtering that automatically matches tissue impedance from 50-2000 ohms thereby providing consistent results through various soft tissue (skin, fat, mucosa, gingiva, etc..)
- Pulse Width Modulation that produces pure clean waveforms for Cut, Blend, and Hemostasis settings
- Unmatched precision and control
- Three distinct modalities: Monopolar, Bipolar, Bipolar TURBO
- Significantly less heat spread compared to traditional electrosurgical devices
- Ease of use

The Benefits

- Revenue generating office and hospital based procedures
- Versatility, efficacy, and precision in even the finest of tissues
- Time saving
- Less heat spread = faster and better quality healing results
- No wound dehiscence
- Less scarring
- Clean biopsy specimens

Multiple tip options available. See page 9

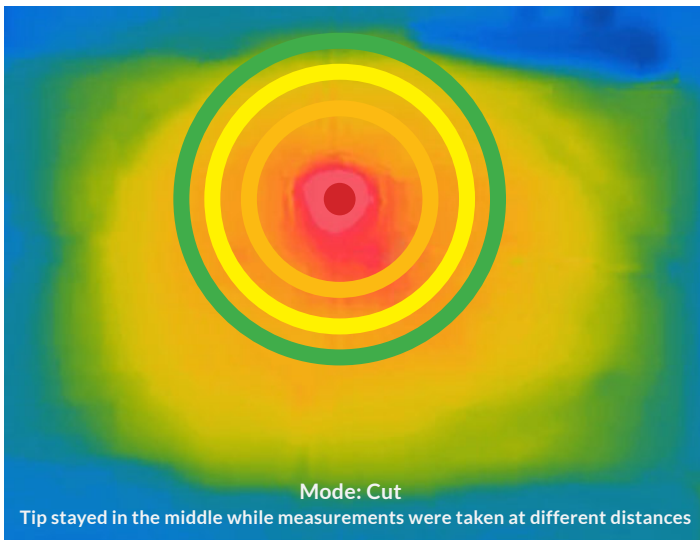


SURGICAL PRECISION & TISSUE PRESERVATION

Temperature Study*

In this study the temperature at the ball tip of the electrode is measured by a thermocouple touching the electrode tip for a fraction of a second. The temperature gathered for the 3mm ball probe tip was 70°C. During this study, the ball probe was held in one place or slowly moved in circular motions.

The results of this heat spread study shows that with the Smoothwave i200 the tissue temperature drop at distances of 1mm, 2mm and 3mm from the tip is dramatic regardless of the power setting on the machine. This study represents settings ranging from 15-30. Therefore less tissue "charring" is seen with the Smoothwave i200, compared to other generators when used at regular power settings. This holds true for results achieved with Soniquence tips.

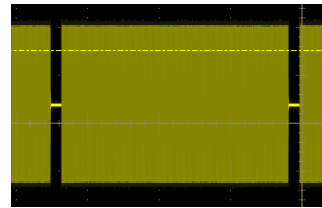


		Power Settings			
		15	20	25	30
Distance	Tip	70.7	70.7	70.7	70.7
	1mm	49.4	49.6	49.6	49.9
	2mm	40	41.2	43.9	46.8
	3mm	38.6	39.4	42.3	43.8
		Temperature Celsius			

*Data on file

Cut

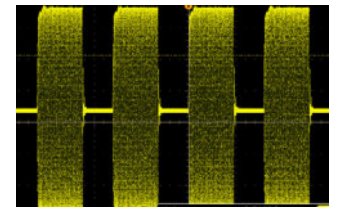
Pure Cut Waveform



- Least lateral heat
- Preferable for skin incisions
- Biopsy specimens
- First intention healing

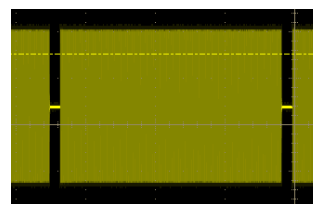
Blend

Cut with Coagulation Waveform



- Tissue dissection
- Tissue shaving (lesion removal, etc..)
- Simultaneous hemostasis

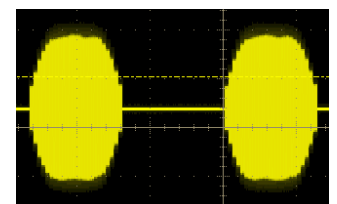
Bipolar TURBO



- Coagulation of larger bleeding vessels
- Bipolar dissection

Bipolar

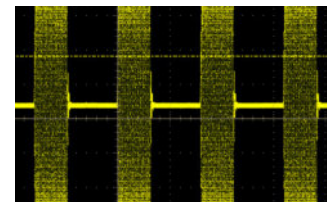
Pinpoint Coagulation



- Ideal for coagulation in and around critical anatomy

Hemo

Coagulation



- Hemostasis of active bleeding
- Treatment of telangiectasia (spider veins)
- Epilation of hair and eye lashes

Soniquence RF can be used to treat Conjunctivochalasis

by contracting redundant or loose conjunctiva.

This procedure is relatively short and a list of CPT codes can be found below:

Code	Eye
H11.821	right
H11.822	left
H11.823	bilateral
H11.829	unspecified eye

View the CCH procedure here:



View a blepharoplasty with Soniquence here:



Soniquence

Disposables



SIEC-3FHPB/D
3-Button Fingerswitch Wand disposable (10pcs)



STEE301-2
Microincision Tip, 5mm Needle Tip Length, 3cm Shaft Length (2pcs)



STEE305-2
Microincision Tip, 3cm Shaft Length, 45 degree Angle (2pcs)



STEE328-2
Microincision Tip, 2.5cm Shaft Length, Curved (2pcs)



SST-W-25
Fine Wire, 3cm Shaft Length (25pcs) Hex Shaft



SST-B3-25
2mm Ball, 3cm Shaft Length (25pcs) Hex Shaft



SST-S-25
Spatula, 3cm Shaft Length (25pcs) Hex Shaft



SST-L5-25
5mm Loop, 3cm Shaft Length (25pcs) Hex Shaft



SST-L10-25
10mm Loop, 3cm Shaft Length (25pcs) Hex Shaft



SBN-25
Broad Needle (25pcs) Hex Shaft



SPIN-25
1/8" Pin Tip (25pcs) Hex Shaft



SVT-25
Multi-Glide Tip (25pcs) Hex Shaft



BIPOLAR MCPHERSON FORCEPS
218-002SS
0.25mm tips, non-insulated, 3-3/10"



BIPOLAR JEWELER FORCEPS
218-004NS
0.25mm tips, insulated, non stick, 4-3/4"



BIPOLAR ADSON FORCEPS
218-010NS
1mm tips, insulated, non stick, 4-3/4"



BIPOLAR CABLE
SIEC-JX/B
reuseable
SIEC-DJX
single use



FLEXIBLE NEUTRAL PLATE
SIEC-NP
reuseable



HAYDEN MEDICAL

LIPOPLASTY



CANNULA HO

Hayden Medical's cannulas and cannula accessories are made of high-quality, medical-grade stainless steel and made to order in the USA. If there is a size or pattern that you don't see, we can make it.

Please contact us directly with custom cannula requests.

HAYDEN MULTI-HOLE HARVESTER

270° of extraction and 18 holes for low-volume liposuction procedures (available with angled shaft). Typically used to harvest for small-volume fat grafting to areas like the face and hands.

Model	Diameter	Length	Hub Options
HC-SAT0315	3mm	15cm	LL/LH/TM
HC-SAT0326	3mm	26cm	LL/LH/TM
HC-SAT0332	3mm	32cm	LL/LH/TM

MERCEDES

360° of extraction and 3 holes for high-volume liposuction procedures. Typically the most popular and commonly used liposuction cannula.

Model	Diameter	Length	Hub Options
HC-MER0326	3mm	26cm	LL/LH/TM
HC-MER0332	3mm	32cm	LL/LH/TM
HC-MER0426	4mm	26cm	LL/LH/TM
HC-MER0432	4mm	32cm	LL/LH/TM
HC-MER0526	5mm	26cm	LL/LH/TM
HC-MER0532	5mm	32cm	LL/LH/TM

BASKET

360° of extraction and 3 flared openings for large-volume liposuction procedures. These can be referred to as a "Flared Mercedes" cannula as well.

Model	Diameter	Length	Hub Options
HC-BAS0326	3mm	26cm	LL/LH/TM
HC-BAS0332	3mm	32cm	LL/LH/TM
HC-BAS0426	4mm	26cm	LL/LH/TM
HC-BAS0432	4mm	32cm	LL/LH/TM
HC-BAS0526	5mm	26cm	LL/LH/TM
HC-BAS0532	5mm	32cm	LL/LH/TM

MERCEDES PLUS (DOUBLE MERCEDES)

360° of extraction and 6 holes for high volume liposuction procedures.

Model	Diameter	Length	Hub Options
HC-MER+0326	3mm	26cm	LL/LH/TM
HC-MER+0332	3mm	32cm	LL/LH/TM
HC-MER+0426	4mm	26cm	LL/LH/TM
HC-MER+0432	4mm	32cm	LL/LH/TM
HC-MER+0526	5mm	26cm	LL/LH/TM
HC-MER+0532	5mm	32cm	LL/LH/TM

CANDY CANE

360° of extraction for medium to high-volume liposuction procedures.

Model	Diameter	Length	Hub Options
HC-CC0326	3mm	26cm	LL/LH/TM
HC-CC0332	3mm	32cm	LL/LH/TM
HC-CC0426	4mm	26cm	LL/LH/TM
HC-CC0432	4mm	32cm	LL/LH/TM
HC-CC0526	5mm	26cm	LL/LH/TM
HC-CC0532	5mm	32cm	LL/LH/TM

LE PATTERNS

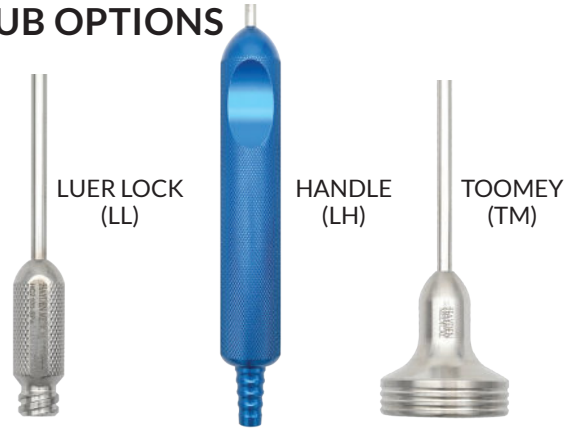


SPATULA

90° of extraction and a single hole for low to medium-volume liposuction procedures. Non-traumatic spatula tips are ideal for delicate areas like the face and neck.

Model	Diameter	Length	Hub Options
HC-SPA0215	2mm	15cm	LL / LH / TM
HC-SPA0315	3mm	15cm	LL / LH / TM
HC-SPA0415	4mm	15cm	LL / LH / TM
HC-SPA0515	5mm	15cm	LL / LH / TM

HUB OPTIONS



SPATULA 2-PORT

90° of extraction and 2 holes for low to medium-volume liposuction procedures. Non-traumatic spatula tips are ideal for delicate areas like the face and neck.

Model	Diameter	Length	Hub Options
HC-SP20215	2mm	15cm	LL / LH / TM
HC-SP20315	3mm	15cm	LL / LH / TM
HC-SP20415	4mm	15cm	LL / LH / TM
HC-SP20515	5mm	15cm	LL / LH / TM



MODERN SPIRAL

270° of extraction with multiple holes for high-volume aspiration. The Modern Spiral cannula is becoming the new favorite of surgeons who traditionally use a Tri-Port or Mercedes cannula.

Model	Diameter	Length	Hub Options
HC-MS0326	3mm	26cm	LL / LH / TM
HC-MS0332	3mm	32cm	LL / LH / TM
HC-MS0426	4mm	26cm	LL / LH / TM
HC-MS0432	4mm	32cm	LL / LH / TM
HC-MS0526	5mm	26cm	LL / LH / TM
HC-MS0532	5mm	32cm	LL / LH / TM



TRI-PORT

270° of extraction and 3 holes for high-volume liposuction procedures.

Model	Diameter	Length	Hub Options
HC-III0215	2mm	15cm	LL / LH / TM
HC-III0226	2mm	26cm	LL / LH / TM
HC-III0315	3mm	15cm	LL / LH / TM
HC-III0326	3mm	26cm	LL / LH / TM
HC-III0332	3mm	32cm	LL / LH / TM
HC-III0415	4mm	15cm	LL / LH / TM
HC-III0426	4mm	26cm	LL / LH / TM
HC-III0432	4mm	32cm	LL / LH / TM
HC-III0526	5mm	26cm	LL / LH / TM
HC-III0532	5mm	32cm	LL / LH / TM



TRI-PORT PLUS FOR LARGE-VOLUME HARVESTING

270° of extraction and 3 holes for high-volume liposuction procedures.

Model	Diameter	Length	Hub Options
HC-III+0326	3mm	26cm	LL / LH / TM
HC-III+0332	3mm	32cm	LL / LH / TM
HC-III+0426	4mm	26cm	LL / LH / TM
HC-III+0432	4mm	32cm	LL / LH / TM
HC-III+0526	5mm	26cm	LL / LH / TM
HC-III+0532	5mm	32cm	LL / LH / TM



INJECTION & INFILT

MICRO INJECTION



STYLE 1

Model	Diameter	Length	Hub Options
HC-MIN11607	16ga	7cm	LUER LOCK
HC-MIN11609	16ga	9cm	LUER LOCK
HC-MIN11807	18ga	7cm	LUER LOCK
HC-MIN11809	18ga	9cm	LUER LOCK
HC-MIN11905	19ga	5cm	LUER LOCK
HC-MIN12003	20ga	3cm	LUER LOCK
HC-MIN12005	20ga	5cm	LUER LOCK



STYLE 3

Model	Diameter	Length	Hub Options
HC-MIN31607	16ga	7cm	LUER LOCK
HC-MIN31609	16ga	9cm	LUER LOCK
HC-MIN31807	18ga	7cm	LUER LOCK
HC-MIN31809	18ga	9cm	LUER LOCK



STYLE 2

Model	Diameter	Length	Hub Options
HC-MIN21607	16ga	7cm	LUER LOCK
HC-MIN21609	16ga	9cm	LUER LOCK
HC-MIN21807	18ga	7cm	LUER LOCK
HC-MIN21809	18ga	9cm	LUER LOCK



"V" DISSECTOR

Model	Diameter	Length	Hub Options
HC-MINV1215	12ga	15cm	LUER LOCK
HC-MINV1225	12ga	25cm	LUER LOCK
HC-MINV1415	14ga	15cm	LUER LOCK
HC-MINV1409	14ga	9cm	LUER LOCK
HC-MINV1607	16ga	7cm	LUER LOCK
HC-MINV1609	16ga	9cm	LUER LOCK
HC-MINV1807	18ga	7cm	LUER LOCK

MICRO ASPIRATION



MERCEDES

Model	Diameter	Length	Hub Options
HC-MER1215	12ga	15cm	LUER LOCK
HC-MER1225	12ga	25cm	LUER LOCK
HC-MER1415	14ga	15cm	LUER LOCK
HC-MER1425	14ga	25cm	LUER LOCK
HC-MER0315	3mm	15cm	LUER LOCK
HC-MER0325	3mm	25cm	LUER LOCK



FAT ASPIRATION CANNULA (FAC)

Model	Diameter	Length	Hub Options
HC-MAN1215	12ga	15cm	LUER LOCK
HC-MAN1220	12ga	20cm	LUER LOCK
HC-MAN1225	12ga	25cm	LUER LOCK
HC-MAN1415	14ga	15cm	LUER LOCK
HC-MAN1425	14ga	25cm	LUER LOCK

RATION CANNULAS

BODY TISSUE INJECTION



STYLE 1

Model	Diameter	Length	Hub Options
HC-MIN11215	12ga	15cm	LUER LOCK
HC-MIN11220	12ga	20cm	LUER LOCK
HC-MIN11225	12ga	25cm	LUER LOCK
HC-MIN11415	14ga	15cm	LUER LOCK
HC-MIN11420	14ga	20cm	LUER LOCK
HC-MIN11425	14ga	25cm	LUER LOCK

TUMESCENT INFILTRATION



BODY ANESTHESIA NEEDLE

Model	Diameter	Length	Hub Options
HC-BAN1015	10ga	15cm	LUER LOCK
HC-BAN1032	10ga	32cm	LUER LOCK
HC-BAN1215	12ga	15cm	LUER LOCK
HC-BAN1225	12ga	25cm	LUER LOCK
HC-BAN1232	12ga	32cm	LUER LOCK
HC-BAN1415	14ga	15cm	LUER LOCK
HC-BAN1425	14ga	25cm	LUER LOCK
HC-BAN1432	14ga	32cm	LUER LOCK
HC-BAN1615	16ga	15cm	LUER LOCK

TISSUE TRANSFER

SOFT TISSUE TRANSFER SYSTEM

SYRINGE, LUER LOCK TO LUER LOCK



Model	Diameter
HC-LL3	3mm
HC-LL4	4mm

MICRO TRANSFER HUB SET



Model	Description
NFT-SET	Set of 3

FACIAL ANESTHESIA NEEDLE



Model	Diameter	Length	Hub Options
HC-FAN1415	14ga	15cm	LUER LOCK
HC-FAN1615	16ga	15cm	LUER LOCK

TWIST LOCK



Model	Used with
HC-MJ-TL60	60cc Monoject Syringe
HC-BD-TL60	60cc BD Syringe
HC-MJ-TL35	35cc Monoject Syringe
HC-BT-TL20	20cc BD and 20cc Terumo Syringe
HC-BD-TL30	30cc BD Syringe
HC-BD-TL10	10cc BD Syringe
HC-MJ-TL10	10cc Monoject and 12cc Monoject Syringe



INFUSION HANDLE 3/4" with On/Off Control



Model	Description
HC-INFU-C-BLK	A flow on/off control infusion handle for use with roller pump devices.

INFUSION HANDLE



Model	Description
HC-INFU-NC-L	Standard Infusion handle, No Control. Ideal for infusion needle, 1" diameter.

ASPIRATION HANDLES



Model	Description
HC-AH-S	Standard Aspiration Handle 3/4"
HC-AH-L	Standard Aspiration Handle 1"

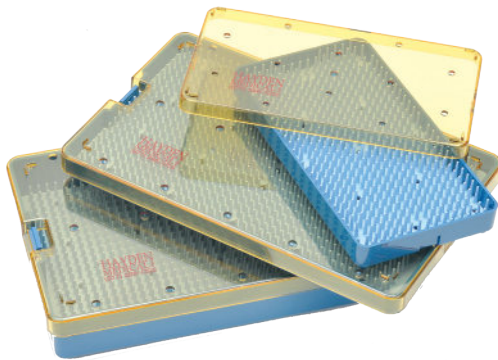
AWLS



Model	Description
HC-EP3	3mm

PLASTIC STERILE TRAYS

- Autoclavable
- Silicone Finger-Tip Mats



Model	Description
030-105	4" x 7-1/2" x 3/4"
030-105.5	4" x 7-1/2" x 1-1/2"
030-107	6" x 10" x 3/4"
030-108	6" x 10" x 1-1/2"
030-108D	6" x 10" x 1-1/2" Double-Decker
030-111	10" x 15" x 3/4"
030-112	10" x 15" x 1-1/2"

SNAPPER LOCKS



Model	Description
HC-BT-SL10	for 10cc BD and 10cc Terumo Syringe
HC-MJ-SL10	for 10cc Monoject and 12cc Monoject Syringe
HC-BD-SL20	for 20cc BD Syringe
HC-MJ-SL20	for 20cc Monoject Syringe
HC-BD-SL30	for 30cc BD Syringe
HC-MJ-SL35	for 35cc Monoject Syringe
HC-TR-SL60	for 60cc Terumo Syringe
HC-MB-SL60	for 60cc Monoject and B-D Syringe

NEEDLE CONNECTOR



Model	Description
HC-NC	Needle connector for use with tubing

AUTOLOGOUS FAT TRANSFER SET (FACE)

ORDER ENTIRE SET
HC-FACE

Model	Description
HC-MAN1215	Micro Aspiration Harvesting Cannula - 12ga x 15cm
HC-MIN11607	Style 1 Micro-Injector - 16ga x 7cm
HC-MIN21609	Style 2 Micro-Injector - 16ga x 9cm
HC-MIN31609	Style 3 Micro-Injector - 16ga x 9cm
HC-FAN1615	Facial Anesthesia Needle - 16ga x 15cm
HC-SL20	Snapper Lock for 20cc Syringe
NFT-SET	Micro Transfer Hub Set - ID 1.2mm, 1.4mm & 2.4mm



Micro Aspiration Harvesting Style 1 Micro Injector Style 2 Micro Injector Style 3 Micro Injector Facial Anesthesia Needle Snapper Lock for 20cc Syringe Micro Transfer Hub Set

AUTOLOGOUS FAT TRANSFER SET (BREAST)

ORDER ENTIRE SET
HC-BRST

Model	Description
HC-BAN1215	Tumescent Infiltration Cannula - 12ga x 15cm
HC-III0315	Tri-Port Harvester - 3mm x 15cm
HC-MIN11215	Style 1 Micro-Injector - 12ga x 15cm
HC-SL60	Snapper Lock for 60cc Syringe
NFT-2.4	Transfer Hub, Female Luer Ends - ID 2.4mm



Tumescent Infiltration Cannula Tri-Port Harvester Style 1 Micro Injector Snapper Lock for 60cc Syringe Transfer Hub Female Luer Ends

AUTOLOGOUS FAT TRANSFER SET (GLUTEAL)

ORDER ENTIRE SET
HC-GLUT

Model	Description
HC-MER0420	Mercedes Cannula - 4mm x 20cm
HC-MER0425	Mercedes Cannula - 4mm x 25cm
HC-MIN10315	Style 1 Injector - 3mm x 15cm
HC-MIN10320	Style 1 Injector - 3mm x 20cm
HC-BAN1225	Tumescent Infiltration Cannula - 12ga x 25cm



Mercedes Cannula (2) Style 1 Injector (2) Tumescent Infiltration Cannula

TUMESCENT INFILTRATION SET

ORDER ENTIRE SET
HC-TINF

Model	Description
HC-BAN1232	Tumescent Infiltration Cannula - 12ga x 32cm
HC-BAN1415	Tumescent Infiltration Cannula - 14ga x 15cm
HC-INFU-C-BLK	Infusion Handle with On/Off Control - Black



Tumescent Infiltration Cannula (2) Black Infusion Handle



PRISM PARTICLE SIZER™

The **PRISM PARTICLE SIZER™** is a particle-sizing and filtering device for human tissue and/or fluid. When used to process fat aspirate, the device creates precision-sized micro-fragmented adipose tissue (MFAT) across a selectable dynamic sizing range of 3000-µm to 200-µm.

BENEFITS OF PPS DEVICE INCLUDES:

- More ergonomic single pass sizing & filtering
- Creates the most purified processed fat aspirate
- Cost-effective, reusable, Class I medical device
- Patent pending and manufactured in the USA
- Recommended PPS device accessories include:

PRISM CAROUSEL™

PRISM TRANSFER CANNULA™

PRISM CANNULA CLEANER™



Model	Description
PPS-Face	2000-µm 1500-µm 900-µm 500-µm 300-µm
PPS-Breast	2500-µm 1500-µm 1200-µm
PPS-Hands	2000-µm 1200-µm 1000-µm
PPS-Buttocks	3000-µm 2500-µm 2000-µm 1500-µm
PPS-Regenerative	3000-µm 2500-µm 2000-µm 1500-µm
PPS-Set	3000-µm 2500-µm 2000-µm 1500-µm 1200-µm 1000-µm 900-µm 800-µm 700-µm 600-µm 500-µm 400-µm 300-µm 200-µm

PRISM PARTICLE SIZER ACCESSORIES

PRISM CAROUSEL™



Model	Description
P-CAR-6	One Decanting/Storage Rack for 6 Luer-Lock Syringes
P-CAR-12	One Decanting/Storage Rack for 12 Luer-Lock Syringes

PRISM CANNULA CLEANER™



Model	Description
PCC	One reusable nylon tool for cleaning and removing debris when reprocessing PPS device

PRISM TRANSFER CANNULA™



Model	Description
PTC-SET	Set of one shorter and one longer Cannula for transferring fat aspirate while using the PPS device system

The **PRISM PARTICLE SIZER™** medical device and its recommended accessories are FDA-registered and manufactured by HOGUE SURGICAL (Maple Grove, MN, USA)

INFILTRATION PUMP

- Delivers High-Volume of Tumescant Fluid
- Can Sit on Aspirator
- Compact and Minimal Noise

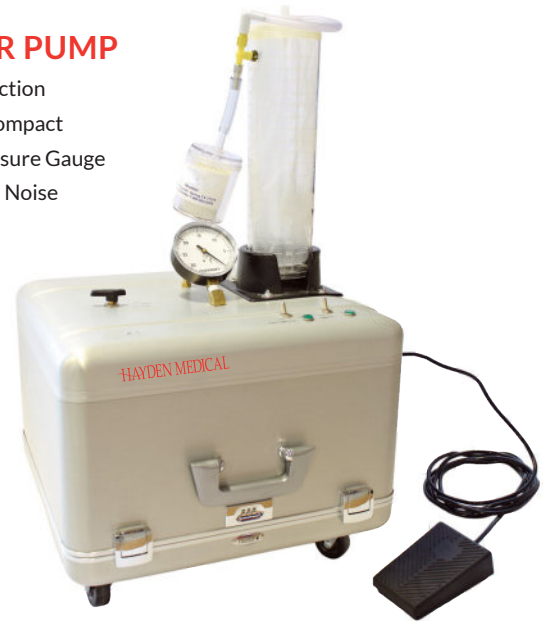


The tumescent infiltration pump has varying inflow and outflow rates for more precise infiltration of fluid. This has become a favorite for surgeons who tumesce in smaller or larger areas to deliver a more accurate amount of tumescent fluid.

Model	Description
HC-HIP	Maximum flow rate: 1000ml/min Motor: 0 to 600RPM

ASPIRATOR PUMP

- High-Torque Suction
- Portable and Compact
- Integrated Pressure Gauge
- Minimal Device Noise



Hayden Medical's aspirator has 2 pumps for increased aspiration. It is constructed with a muffler to dampen noise as well as insulation for further sound dampening. Our aspirators include a limited 5-year warranty on parts and labor.

Model	Description
HC-AP4	Suction Aspirator



FAT COLLECTION CANISTER KIT

Autoclavable canisters for use during liposuction procedures where fluid/tissue needs to be extracted from the bottom of the canister. Extraction is performed with a luer lock syringe by connecting it to the reusable luer lock extraction tube provided in the complete kit.

Canister Kits are Completely autoclavable and include:

- Fat Transfer Canister
- Canister Lid
- Extraction Tube
- Canister Stand
- Tube Adapter

Model	Description
HFAT-1000CC	1000cc Kit
HFAT-3000CC	3000cc Kit

Outfit your surgical suite and procedure rooms with our wide range of new and refurbished equipment. We offer major brands and can match your needs with multiple choices to suit your specific budget. We pride ourselves on the quality of our products, excellent customer service and service after the sale.

SURGICAL LIGHTING



STAINLESS STEEL TABLES AND STANDS



PROCEDURE CHAIRS



PATIENT MONITORS



TABLE TOP AUTOCLAVES



DOCTOR'S STOOL



SURGICAL STOOL



ANESTHESIA MACHINES, AUTOCLAVES, SURGICAL C-ARMS, C-ARM TABLES, DEFIBRILLATORS, ELECTROSURGICAL UNITS, ENDOSCOPY EQUIPMENT, EXAM TABLES, MEDICAL STAINLESS STEEL, MEDICAL STRETCHERS, PATIENT MONITORS, PROCEDURE TABLES, SURGICAL MICROSCOPES, SURGICAL LIGHTING, SURGICAL TABLES, WARMING CABINETS

Scan below to visit our website and purchase.

